

**University of the Built Environment
Institutional Research Repository**

Title	Knowledge Foundations, Issue 5 - May 2021
Author(s)	Lucy B M Roper
ORCID	
Type	Other
Publication title	
Publisher	UCEM
ISSN/ISBN	
Date	1 May 2021
Version	
DOI	
Repository link	https://ube.repository.guildhe.ac.uk/id/eprint/57/
Link to publication	https://www.ucem.ac.uk/e-library
Notes	This publication version may differ from the final version

Copyright:

The University aims to make research outputs available to a broader audience via its digital [Repository](#). Where copyright permits, full text material held in the Repository is made freely available. URLs from GuildHE Research Repositories maybe freely distributed and linked to. Please refer to each manuscript for any further copyright restrictions.

Reuse: Copies of full items can be used for personal research or study, educational, or not-for-profit purposes without prior permission or charge provided that the authors, title and full bibliographic details are credited, a hyperlink and/or URL is given for the original metadata page, and the content is not changed in any way.



Knowledge Foundations

Inside this issue

- 01 UCEM News
- 02 Other News
- 03 Built Environment Research
- 04 Property & Construction Statistics
- 05 e-Journal Review
- 06 e-Book Review
- 07 UCEM e-Library
- 08 Student Career Service
- 09 UCEM's Sustainability Hub
- 10 Information Governance

A to Z of useful references and web-links

What's in this month's issue

- **Latest UCEM News** incl. The launch of the new UCEM Website and brand evolution – Built For Life!
- **Things you need to know this week** – Government allocates £562 million to home energy retrofits. Funding will help cut carbon emissions and tackle fuel poverty, but questions remain over need to drive action on existing homes.
- **Latest Research** from JRF, CABE, CBRE, CIOB, RICS, Savills, SI, and more.

Happy Reading!

Issue 5 – May 2021

Welcome to UCEM's monthly *Knowledge Foundations* newsletter (formally the Library e-bulletin), a compendium of news and views, research and resources relating to the educational sector and Built Environment.

The UCEM Library aims to disseminate information, promote current awareness, and share good practice, to assist in the continual professional development of all those working and aspiring to work within the Built Environment/Property and Construction industries.

“The mission of librarians is to improve society through facilitating knowledge creation in their communities.”

(R. David Lankes)

The initial aim of this UCEM Library current awareness service was to help keep students and staff informed of the education sector and industry specific news, share current and best practice, highlight the latest research, and identify case studies that will support studying and supplement teaching and learning resources. However, over the years and upon request, the readership has now expanded.

We welcome news and information from readers to include in future editions - please [email us](#).

Supported Online Learning

The readership of *Knowledge Foundations* has expanded (to include Alumni) and is now promoted further afield, with the latest version appearing on the UCEM Website.

[Visit Supported Online Learning](#)

[Back to top](#)



UCEM News

UCEM have upgraded their website

From bespoke content for prospective students and employers to information on careers in the built environment and our pioneering online education, [the new UCEM website](#) has it all! Why not visit today and take a look! **#BuiltForLife**



© UCEM 2021

City University of Hong Kong students awarded scholarships by UCEM

Four high-achieving City University (CityU) of Hong Kong students were awarded scholarships by UCEM last week (see publication date).

Building Services Engineering student, Shek Kai Nam, Construction Engineering and Management student, Fung Sho Lung, and Surveying students, Fong Yiu Sang and Li Cheuk Man, were this year's recipients of the awards, which go to those with an excellent academic record to encourage them to carry on with their built environment studies.

The students' achievements were marked with a small ceremony at CityU attended by UCEM's Hong Kong ambassador, Gabriel Lee, education consultant, Dione Tse, and admin officer, Melinda Cheung, as well as CityU representatives.

UCEM's dean of school (international), Tim Bennett, and director of commercial and business development, Stephen Bartle, attended via Zoom, with Tim Bennett delivering a speech congratulating the recipients.

Framed certificates marking the scholarship award were presented to the three recipients who attended, with Shek Kai Nam sending their apologies.

Each student wrote a letter of thanks to UCEM for the HK\$10,000 scholarship award.

Fung Sho Lung wrote: 'Your generosity has inspired me to help others and give back to the community. I hope one day I will be able to help students achieve their goals just as you have helped me.'

Li Cheuk Man wrote: 'I will never forget the kindness and support of UCEM', Fong Yiu Sang wrote: 'I can concentrate on my studies as the financial burden of my family has been greatly reduced',

[Back to top](#)

and Shek Kai Nam wrote: 'I promise I will make good use of the scholarship in supporting my academic studies'.

The scholarships go to final-year students of CityU's Division of Building Science and Technology who have achieved outstanding academic results and demonstrate good personal qualities, such as involvement in community initiatives.

Tim Bennett commented: "Since awarding the scholarships for the first time in 2017, this activity has turned into an annual highlight. The calibre of recipients is very high and each student is hugely deserving of their scholarship. It's a great honour to award these scholarships to students who will surely make a positive difference in the built environment in future."

[Access the article 'City University of Hong Kong Students awarded scholarships by UCEM' in full.](#)

Other UCEM News:**HKICM re-accredits five UCEM Programmes**

The Hong Kong Institute of Construction Managers (HKICM) has re-accredited five UCEM programmes.

UCEM's BSc (Hons) programmes in Building Surveying, Construction Management and Quantity Surveying, and the university's MSc programmes in Building Surveying and Quantity Surveying – the only programmes already accredited by HKICM – will be re-accredited for five years from 25 April 2021.

[Access the article 'HKICM re-accredits five UCEM programmes' in full.](#)

The CIOB re-accredits seven UCEM Programmes

Seven UCEM programmes have been re-accredited by the Chartered Institute of Building (CIOB) after a successful accreditation event.

Following the desktop review and virtual visit, the Chartered Institute of Building (CIOB) re-accredited UCEM's BSc (Hons) and MSc programmes in Building Surveying, Construction Management and Quantity Surveying, and its MBA in Construction and Real Estate. UCEM's BSc (Hons) Building Control programme was accredited by the CIOB for the first time. All accreditations are valid until 31 December 2025.

In the Accreditation Panel's final report, UCEM received no conditions, five commendations and two recommendations.

The five commendations were:

1. Highly responsive to the student voice will clear feedback loop actions,
2. Very detailed and good quality feedback to students, both formative and summative,

[Back to top](#)

3. The VLE and supporting infrastructure clearly delivers a high-quality learning and student experience,
4. The quality of both UCEM's internal review mechanism and the documentation for the reaccreditation event,
5. The dedicated staff across all the institution – it was clearly evident from the panel meetings that this is a team event.

The two recommendations were to 'maintain the high standards that you have established' and 'increase the involvement of the local CIOB'.

Tim Bennett, UCEM Dean of School (International), commented: 'I am delighted at the access of the virtual re-accreditation event.'

"It is essential that our programmes meet the criteria of the professional accrediting bodies. Our programmes are mapped to built environment professions and the accreditations signify that our students will be equipped for a successful career in the sector when they complete their studies by the CIOB."

"I was particularly pleased by the commendations given by the CIOB. The event emphasised the importance of our programmes in helping built environment professional boost their career."

[Access the article 'The CIOB re-accredits seven UCEM programmes' in full.](#)

UCEM adopts IHRA's definition of antisemitism

UCEM has adopted the International Holocaust Remembrance Alliance's (IHRA) definition of antisemitism.

There is no place for racism, discrimination or bullying at UCEM, with the adoption of the definition an important step in the university's efforts to be an inclusive place to work and study.

UCEM's Student Disciplinary Policy, External Speaker Policy and Safeguarding Glossary has been updated to reflect the adoption of the IHRA's definition of antisemitism, and awareness events will be organised for staff and students.

Head to the [IHRA website](#) for the full working definition of antisemitism, and [access the article 'UCEM adopts IHRA's definition of antisemitism' in full.](#)

New research calls Government to improve the apprenticeship system to create a better skilled workforce for vital infrastructure projects.

High skills, high tech construction apprenticeships are needed to boost the skills needed in infrastructure projects to drive the UK's economic recovery.

This is what is being called for by the authors of a new research report, released on 19 October 2020, entitled '*Build back better*':

[Back to top](#)*Improving the apprenticeship system to better support infrastructure’.*

The report, written on behalf of the Construction Industry Council (CIC), UCEM and the Technical Apprenticeship Consortium (TAC), with data used from a CIC survey of employers, recommends that Government works with CIC, employers, and the professional bodies to:

- Recognise the value of technical and higher-level apprenticeships leading to a professional registration.
- Increase the flexibility of the apprenticeship levy.
- Join up and improve the apprenticeship systems across the UK
- Celebrate and promote apprenticeships.

Aled Williams, who co-authored the report and is CIC Champion on Higher Education and UCEM’s Director of Research, Innovation and Partnerships, commented:

“The construction industry is integral to the UK’s financial health and can provide the catalyst for an economic recovery accelerated by the COVID-19 pandemic.

“Apprenticeships are hugely important for employers to train workforces with the appropriate skill set to achieve the ambitious infrastructure projects projected across the nation, however, both businesses and education providers need to have more input in how these are run. The research shows that there is a desire throughout the construction industry to get apprenticeships right and, if Government listens and acts upon the recommendations outlined, there could be huge benefits for the UK.”

CIC Chief Executive, Graham Watts OBE, added: “CIC would like to thank UCEM and everyone else involved for their time and expertise in pulling together this crucial report. Now is the time for Government to work with our sector to showcase and promote the careers across the full spectrum of employers and occupational roles, showing the opportunity that future talent can have in driving forward innovation and technological solutions that will share their environment for the better.”

To read the full report, head to the [UCEM Latest Publications webpage](#).

[Access further information and the article ‘New research calls Government to improve the apprenticeship system to create a better skilled workforce for vital infrastructure projects’, in full.](#)

New research calls for unified approach to UK real estate data standards

UK real estate data must be allowed to flow freely beyond the existing silos in order for the industry to flourish and standards have a key role to play in facilitating this.

[Back to top](#)

This is one of the key findings from [the research report: ‘The role of standards in enabling a data driven UK real estate market’](#), authored by Dan Hughes and released on 30th September 2020 on behalf of the Real Estate Data (RED) Foundation.

The research explores the role of standards in ensuring an effective flow of data across the whole built environment, to set the scene for a sector-wide discussion on what is available, what is needed and the future role of people.

Among the additional insights included in the report, funded by [UCEM’s Harold Samuel Research Prize](#) are:

- Real estate has a well-established and robust set of standards.
- Existing standards need to be more valued and more easily discoverable.
- The value and cost of standards and data needs to be recognised fairly.
- It will become increasingly difficult for professionals to have clarity regarding both data and the standards that influence it.

“The role that standards have to play in enabling a data-driven real industry is substantial, but it is also very complex. There are a number of challenges that must be faced at a sector level and whilst the way forward may not always be clear, it is not something that should be ignored.”

Amanda Clack, Executive Director and Head of Strategic Advisory at CBRE and UCEM’s Chair Designate added: “This comprehensive and well written research is clear that as we see decisions increasingly based on data from the full lifecycle, and that whilst today (see publication date) have well-established standards, as we see asset types increasingly blur, new factors such as productivity, sustainability and well-being will rise up the agenda and be even more data reliant.

“The next steps are clear: improve discoverability, increase connectivity, understand value and clarify the role of people. Our role now is to work together to put these next steps into action.”

To read the report, head to [the research webpage](#).

[Access further information and the article ‘New research calls for unified approach to UK real estate data standards’, in full.](#)

COVID-19: University College of Estate Management (UCEM) response to COVID-19

As a responsible employer and educator, UCEM’s commitment is to protect the health of all students, staff, clients, and suppliers by adhering strictly to advice offered by Public Health England, The World Health Organisation, Office for Students, local and central government, whilst remaining committed to maintaining our usual excellent standard of student experience.

[Back to top](#)

Please find below the steps we've taken to adhere to current and ongoing advice. As the situation is ever-changing, we fully review the guidelines and our actions daily and will quickly adapt if necessary (**Note** the publication date of this article).

- All staff who are able to work from home are doing so. We have been anticipating this situation and had prepared for it full. We have an advanced IT infrastructure in place to enable remote working, so we continue to operate as usual.
- As an online pedagogical institution, we are experts at online teaching and our deliver model will continue as normal.
- The small number of staff remaining in Horizons Head Office have been allocated seating at above the recommended distance away from each other.
- We are operating a policy of no external meetings and no visitors to Horizons Head Office
- All managers and department heads have been briefed with respect to our self-confinement policy and our treatment of any staff member displaying symptoms that may be linked to COVID-19.
- All staff are continually reminded of the importance of following the 20-second guideline for handwashing.

If you have any further questions, please contact:

- Student enquiries – Student Central on our VLE
- Employer enquiries – businessdevelopment@ucem.ac.uk
- Other enquiries – reception@ucem.ac.uk , Tel: +44(0)118 467 2100

Our sincere thoughts are with those affected by COVID-19 and its impact around the world.

Further information and the latest developments can be found via the [UCEM Website](#), & **don't forget** that the UCEM [e-Library](#) can be accessed 24/7 (via the VLE-Virtual Learning Environment) with a wealth of valuable resources to help 😊.

Other UCEM News

[UCEM reasserts its commitment to organisational excellence with Advance HE membership](#)

AdvanceHE

Affiliate Member 20-21

© Advance HE 2021

- UCEM has renewed its Advance HE membership for 2020-21, ensuring continued access to vital resources and supporting valuable partnership across the Higher Education sector.

- [Access further information on Advance HE.](#)
- [For more on UCEM's ambitions, take a look at the Institution's *Vision and Strategy* brochure](#)

UCEM continues Building People support with £50,000 donation

Further information on [Building People](#) can also be accessed via the **Career services** section later in this issue of *Knowledge Foundations*.

Also - Get a helping hand with UCEM's Postgraduate Scholarship Scheme; Built Environment Innovation celebrated at UCEM's first online Property Awards; UCEM's continuing commitment to sustainability recognised with NUS Responsible Futures reaccreditation, and more.

[Keep abreast of the latest UCEM News and events](#) – and read our blog to keep updated on Building Environment industry insights, student case studies, and thoughts from UCEM Principal: Ashley Wheaton

[Back to top](#)



Other News

Things you need to know this week: Government allocates £562 million to home energy retrofits.

- Funding will help cut carbon emissions and tackle fuel poverty, but questions remain over need to drive action on existing homes.

The government has allocated £562 million to more than 200 local authorities in England and Scotland to upgrade the energy efficiency of homes and tackle fuel poverty. The funding is made up of £500 million from the Local Authority Delivery Fund, which is a component of the Green Homes Grant, and £62 million from the Social Housing Decarbonisation Fund Demonstrator. The government expects the funding to enable 50,000 households to have home energy efficiency improvements, with commitments including £10 million for Leeds City Council to upgrade 600 homes and £5.35 million for South Tyneside Council to upgrade 1,570 properties. In the same month, [a report](#) by MPs on the Environmental Audit Committee, criticised the Green Homes Grant and said “emissions reductions from the UK’s 29 million homes have stalled”. RIBA president Alan Jones, said of the latest £562 million allocation, “This pledge seriously underplays the scale of the problem”.

Bristol City Council is starting its search for a development partner to help deliver a 1,400-home scheme in south Bristol. Its Hengrove Park project is set to be the council’s biggest housebuilding scheme and will also have around 12,000 square metres of employment, commercial, retail, education, and community space,

[Back to top](#)

a park and sports pitches. Bristol mayor Marvin Rees said, “Securing a development partner for Hengrove Park is the next step towards delivering the new homes and wider redevelopment of the area”. The planned development is expected to be delivered in phases over 5-10 years, with construction of the first phase of around 250 homes expected to start next year.

Housing associations PA Housing and Accent Group have entered discussions to merge, creating a potential landlord with well over 40,000 homes. PA Housing owns and manages just over 23,000 homes in London, Surrey, and the Midlands, while Accent Group owns and manages more than 20,000 homes in the north, Midlands and south east.

Barrow-in-Furness, St Helens, and Thanet are among 70 locations chosen by the government to receive support from its High Streets Task Force. Each local authority will receive support from the task force’s experts to help drive positive change on their high street. The government has also announced a £56 million Welcome Back Fund to help high streets and seaside towns boost tourism and make outdoor space more appealing. The funding can be used by councils to improve street planting, parks, green spaces, and seating, as well as signage.

London mayor Sadiq Khan has sealed a deal with housing association Peabody to deliver more than 1,550 affordable homes on the former Ford Stamping Plant car works site at Dagenham, east London. The mayor’s affordable housing programme has provided an £80 million grant to enable Peabody to acquire the site, which could accommodate around 3,000 homes in all. Architect PRP has been appointed as the site’s masterplanner. Hugo Black, partner at Europa Capital, the current owner of the site, said, “Having undertaken a thorough remediation of the site, we have created land suitable for development of new homes”. It is hoped that construction works can begin on the site by early 2023. The deal is part of Peabody’s strategic partnership with the mayor, which will see it start 7,000 affordable homes in London by 2023.

Housing association the Hyde Group has formed a strategic partnership with investor M&G to deliver around 2,000 shared ownership homes. The first stage in the partnership sees M&G acquire 422 homes in London and Kent from Hyde through its new M&G Shared Ownership Fund, which was registered last year as a for-profit registered provider. Hyde will continue to manage and maintain the homes. Explaining the move, Peter Denton, chief executive officer at Hyde, said, “Hyde, like all housing associations, faces multiple funding challenges to ensure our homes are safe, decent and sustainable. But we also believe developing new homes is an integral part of our core purpose. If we don’t find new sources of funding, we simply won’t have the resources to keep developing at the same rate”.

(Please note that you will need to register to access these stories in full, although you can ‘Register free for limited access.’

[Back to top](#)

Visit the website, scroll to the base of the homepage, and note access route within 'Subscription and Registration').

[Read the full 'Need to Know: Government allocates £562 million to home energy retrofit' article](#)**Related items:**

House of Commons Environment Audit Committee (2021) *Energy Efficiency of Existing Homes*, Fourth Report of Session 2019-21, [online], London: House of Commons Library. Available at: <https://committees.parliament.uk/publications/5171/documents/52521/default/> [accessed 6 April 2021]

© Parliamentary Copyright House of Commons 2021. This publication has been made available under the terms of the Open Parliament Licence, which is published at: www.parliament.uk/copyright [accessed 6 April 2021]

Evidence relating to this report is published on the [inquiry publications page](#) of the Committee's website.

Case Study: Establishing a council housing company for Oxford

- Oxford City Council's housing company has completed the first homes in its ten-year delivery programme, and is applying lessons from its early experience, finds the author of this article.

Two new homes in a village to the north of Oxford mark a step change in Oxford City Council's delivery of housing. The houses handed over this month at Harts Close in Kidlington are the first fruits of the council's own housing company, Oxford City Housing (OCHL), and its major new housing delivery programme.

The council has set up OCHL to help to respond to the acute need for more affordable homes in the city. It is making a significant commitment to housebuilding, with a strategy to deliver 1,891 homes for rent and sale in and around Oxford over a decade.

Challenges

"The biggest challenges in the programme have been starting from scratch and having to establish the infrastructure to grow a programme of this scale," says Alan Whyde, housing development and enabling manager for OHCL. It has gone from a standing start to delivering more than the two homes at Harts Close. It is building 144 homes on 12 sites around Oxford and expects to complete more than 50 homes this summer (see publication date). Alongside that, it is preparing to submit planning applications for more than 100 homes to maintain the programme's impetus.

Every individual site presents its challenges. "On site, we've encountered the normal issues you would find on any brownfield sites in terms of ground conditions, contamination and archaeology," says Whyde. "The latter has been a particular focus

[Back to top](#)

on some sites, as you might expect in a city with such a long history.”

Solutions

Homes in the programme are for a mix of tenures including social rent, shared ownership and other affordable tenures. The programme includes market sales homes to support the delivery of affordable homes and council homes.

The scale of developments currently coming through the programme range from single houses to a scheme of 38 homes, which is being developed on the site of a former petrol station. Site issues have been overcome through close work with construction partners professional teams and the council’s own planning team, says Wylde, but he acknowledges, “This intense work to overcome ground issues does cost both time and money”.

As a result, the council plans a move to modular housebuilding approaches, for which it is in the process of creating a procurement framework to help address that by allowing a twin track approach to substructure and superstructure works, leading to a quicker delivery of sites,” explains Wylde. “It will also allow Oxford to accelerate our progress towards zero carbon homes by setting out clear, challenging sustainability targets for contractors and ensuring we work with delivery partners, who are capable of delivering our ambitious carbon reduction agenda.” OCHL has committed to delivering homes that get at least 40 per cent beyond current government carbon reduction targets and to targeting zero carbon by 2030.

The Harts Close homes, which are designed by architect Levitt Bernstein, have solar panels, and, unusually three bedrooms to accommodate larger families. The semi-detached homes are being made available on different tenures: one for affordable rent, at 80 per cent or market average, and the other for social rent. Levitt Bernstein’s design for the former petrol station site on Between Towns Road combines a curved apartment building with mews houses, incorporating such sustainable features as mechanical ventilation with heat recovery and photovoltaic panels.

The move to modular is not the only learning emerging from the programme’s early stages. Wylde says, “Something that is clear is the need to better coordinate planning and delivery phases and to avoid baking in problems later by bringing delivery partners into design conversations as early as possible.

With their tenure mix, Sustainable objectives and future modular construction, the programme’s homes, “will benefit everyone in our city,” says councillor Alex Hollingsworth, cabinet member for planning and housing delivery. The programme is, Hollingsworth adds, “an investment in Oxford’s future”.

[Read the full ‘Establishing a council housing company for Oxford’ case study](#)

[Back to top](#)

(Please note that you will need to register to access these stories in full, although you can 'Register free for limited access.' Visit the website, scroll to the base of the homepage, and note access route within 'Subscription and Registration').

Review: Residential-led development in a new mixed use city district

- Angel Gardens on Manchester's northern edge fits tightly on its plot, creating a strong piece of urban architecture, but the landscaping required further though, finds Stephen Gleave, regional cities director-north at planning consultancy AECOM, and author of this article/review.

Angel Gardens is a remarkable location in Manchester city centre. Historically, it was at the heart of the industrial revolution as home to the city's and the world's first steam mills, but none of this is evident today (see publication date). At the corner of Manchester's inner ring road and Shudehill, rises the Angel Gardens residential complex to 35 storeys. It is the latest landmark north of the city centre beyond Victoria station.

It is the first significant residential element of the ambitious new mixed-use district called NOMA, where the council is seeking to expand the city centre northwards. A masterplan and planning development framework have led the way in promoting redevelopment within a street block grid framework. There remains much to do for the district overall but this latest phase is a cornerstone in terms of progress. It brings hope that the city will continue to drive for quality in design of both buildings and the public realm.

City blocks

The street block is simplicity itself. The development forms a quadrangle, albeit with five perimeter footprint buildings. A child with wooden building blocks may have achieved something similar, which is what I like. There were setbacks in the scheme's construction but the black tower, completed last year (2020), is set on a faceted plinth surrounded by the contrasting white perimeter buildings. Different architects have been involved. These include HAUS which designed the tower, FUSE, the perimeter blocks, and the final name on the drawings in Ryder, with Planit on landscape design.

Credit to all involved for keeping to the concept with some fine details included on the way. It builds out to the back of pavement, creating a proper city block. There is a critical appreciation of how to use the base, middle and top components of the blocks and they align with the existing streetscape and each other very capably.

There is clear design reference to the tower and podium of the 1962 CIS office tower across the street and a deliberate understated contrast to the new iconic Co-op headquarter building.

[Back to top](#)

The development comprises more than 450 apartments. Manchester's market remains buoyant for this type of build to rent accommodation and the competition is pushing standards and quality. The city rightly claims an exciting vibrancy. Demand for city centre homes is high and all remain confident that post COVID active ground floor uses will enliven the street. Private amenities include a roof top five-a-side football court and relaxation areas.

The buildings sit tightly on their plots and space for landscape is tight. Despite the quality design and materials, I find the landscaping features a weakness. I dislike the street pines set too close to the building with some incongruous large pots. The weakness in the project stems from needing to work within the constraints of the plot, rather than the whole highway and streetscape. This is a weakness in other cities too. We talk of placemaking but too often we are restricted by plots and governance. In Manchester there is a fresh awareness of the need to both design and manage the whole of the public realm. Let's hope for more in years to come.

The tower set to the south east creates shadow to the minimal lawn, as do the seven storey buildings generally around the perimeter.

Whilst this is unashamedly an urban block, I feel this inner court lacks character. Public access to the entrance courtyard is welcome, but with no current desire lines for the wider neighbourhood for internal active use its presently lacks purpose. This will change with future phases and when commercial uses open on the ground floors.

Angel Gardens is 'a plan coming together'. In itself, the project is a strong piece of city building, but it needs other blocks so it has less need to be judged alone. It also needs activation and connections to be established with nearby neighbourhoods. This will come, and harsh judgements now are unfair.

The next net zero commercial office building is now agreed for NOMA. This, together with residential phases of Northern Gateway just beyond the site and bringing different tenures of housing to the inner core, will add immensely.

Gleave S (2021) 'Review: Residential-led development in a new mixed use city district', *Placemaking Resource* [online], incorporating *Regeneration and Renewal*.

[Further information and read the article, 'Review: Residential-led development in a new mixed use city district' in full.](#)

(Please note that you will need to register to access these stories in full, although you can 'Register free for limited access.' Visit the website, scroll to the base of the homepage, and note access route within 'Subscription and Registration').

[Back to top](#)

Budget 2021 - A Summary from the Heritage Alliance

[Budget 2021](#) took place on 3 March 2021. Here the Heritage Alliance summarises some of the key outcomes:

Business Support

- **The Job Retention Scheme** - or furlough - will be extended until the end of September. From July, the government will introduce an employer contribution towards the cost of unworked hours of 10% in July, 20% in August and 20% in September.
- **Self-Employment Income Support Scheme**
 - People whose turnover has fallen by 30% or more will continue to receive the full 80% grant.
 - People whose turnover has fallen by less than 30% will therefore have less need of taxpayer support and will receive a 30% grant.
 - The 4th grant will cover February to April, worth 80% of average trading profits up to £7,500.
 - A 5th grant will be available from July.
- **Further 100% relief from business rates** to 30th June and 66% reduction in rates for the rest of the 2021/22 financial year for businesses closed in the latest lockdown. The 66% relief is capped at a total of £2million for any one business. When combined with Small Business Rates Relief, this means 750,000 retail, hospitality and leisure properties in England will pay no business rates for 3 months from 1 April 2021, with the vast majority of eligible businesses receiving 75% relief across the year.
- **VAT rate for tourism and hospitality**, kept down to 5% until 30th September and then 12.5% to 31st March 2022 before going back up to 20%.
- **Restart Grants**
 - Non-essential retail businesses will receive grants of up to £6,000 per premises.
 - Hospitality, accommodation, and leisure businesses will get grants of up to £18,000.
- **Additional Restrictions Grants**
 - An additional £425 million of discretionary business grant funding, on top of the £1.6 billion already allocated.
- **Recovery Loan Scheme**
 - Recovery Loan Scheme will provide lenders with a guarantee of 80% on eligible loans between £25,000 and £10 million to give them confidence in continuing to provide finance to UK businesses. The scheme will be open to all businesses, including those who have already received support under the existing COVID-19 guaranteed loan schemes.

[Back to top](#)

Other areas covered include: **Arts, Culture and Heritage Funding**; and **Other Funds** incl. Levelling Up Fund prospectus launch; UK Community Renewal Fund prospectus launch; Community Ownership Fund; Heritage Fuels – Red Diesel; Across the Creative Industries; Tax Reliefs and Exemptions; Help to Grow: Digital; and

- **Traineeships**

- Additional £126 million for high quality work placements and training for 16–24-year-olds. Employers who provide trainees with work experience will continue to be funded at a rate of £1,000 per trainee.
- Payments for employers who hire new apprentices between 1 April 2021 and 30 September 2021 will receive £3,000 per new hire. This is in addition to the existing £1,000 payment the government provides for all new 16–18-year-old apprentices.
- The government will introduce a £7 million fund from July 2021 to help employers in England set up and expand portable apprenticeships. This will enable people who need to work across multiple projects with different employers to benefit from the high-quality long-term training that an apprenticeship provides.

[Access further information from the Heritage Alliance ‘Budget 2021 – A summary’, in full.](#)

Related Links:

Government launches £7.1bn National Homebuilding fund

- The government will create a £7.1bn National Homebuilding Fund to unlock the development of 860,000 new homes.

It was one of a number of spending pledges from the Chancellor to help kickstart the post-Covid economy, which also included a £4bn ‘levelling up’ fund which will allow local authorities across England to compete for investment in a range of schemes up to £20m to improve the local area.

And the government renewed its commitment to build or rebuild 500 schools across the UK over the next five years, as well as to build 40 new hospitals over the next 10 years.

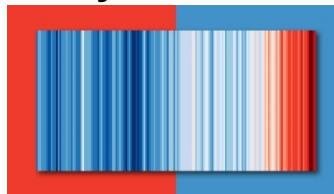
Meanwhile the government has published its delayed **National Infrastructure Strategy**, entitled ‘Fairer, faster, greener’, which aims to deliver improvements to UK infrastructure while putting the UK on the path to net zero emissions by 2050.

Within the document, the government pledged to accelerate and improve delivery of projects through reforms to the planning system, as well as improvements to the way projects are procured, and the greater use of construction technology.

[Back to top](#)

[Access further information and the *Construction Manager* article, 'Government launches £7.1bn National Homebuilding fund', in full.](#)

UK sets 'most ambitious' climate target to cut emissions by 78% by 2035



[Image: courtesy Ed Hawkins]

(Climate stripes as shown in this image are sometimes referred to as warming stripes, or climate timelines and are data visualization graphics that use a series of coloured stripes chronologically ordered to visually portray long-term temperature trends.)

The UK government has set the 'world's most ambitious' climate change target into law to slash emissions by 78% by 2035 compared to 1990 levels.

In line with the recommendation from the independent [Climate Change Committee](#), this sixth Carbon Budget limits the volume of greenhouse gases emitted over a 5-year period from 2033 to 2037, taking the UK more than three-quarters of the way to reaching [net zero by 2050](#). For the first time, this Carbon Budget will incorporate the UK's share of international aviation and shipping emissions.

This comes ahead of prime minister Boris Johnson addressing the opening session of the US Leaders' Summit on Climate, hosted by President Biden on **Earth Day (22 April)**. Johnson will urge countries to raise ambition on [tackling climate change](#) and join the UK in setting stretching targets for reducing emissions by 2030 to align with net zero.

The government is already working towards its commitment to reduce emissions in 2030 by at least 68% through the UK's latest Nationally Determined Contribution. The latest announcement builds on this goal to achieve a 78% reduction by 2035. The new target will become enshrined in law by the end of June 2021.

'Raising the bar on tackling climate change'

Prime minister Boris Johnson said: "We want to continue to raise the bar on tackling climate change, and that's why we're setting the most ambitious target to cut emissions in the world.

"The UK will be home to pioneering businesses, new technologies and green innovation as we make progress to [net zero emissions](#), laying the foundations for decades of economic growth in a way that creates thousands of jobs.

"We want to see world leaders follow our lead and match our

[Back to top](#)

ambition in the run up to the crucial **climate summit COP26**, as we will only build back greener and protect our planet if we come together to take action.”

‘Government must clearly map out how it plans to tackle the carbon emissions’

Ben Harris, UK climate change & sustainability director at Arcadis, and Catherine Greaves, managing director of environment, safety & industry, said: “We welcome the news from the UK Government this morning on the adoption of the 78% reduction in carbon emissions by 2035 on the advice of the Committee on Climate Change.

“If we are to take this new target seriously, Government must clearly map out how it plans to tackle the carbon emissions attributable to the built environment, which account for approximately 40% of UK emissions.”

[Access further information and the *PBC Today* article, ‘UK sets ‘most ambitious’ climate target to cut emissions by 78% by 2035’, in full.](#)

Please also visit the ‘**Sustainability Hub**’ within *Knowledge Foundations* for further information and related articles.

Coronavirus – latest developments [April 2021]**LIVE News Latest – Covid fines system muddled and unfair, say MPs****Summary:**

- Fines for Covid lockdown breaches should be reviewed because they hit poorer people, MPs and peers on the Joint Committee on Human Rights say,
- More than 85,000 fixed penalty notices have been issued in England since the pandemic began, and 8,000 in Wales,
- People aged 42 and over in England are now able to book their Covid-19 jab, under a further extension of the vaccine rollout,
- PM to chair cabinet meeting later amid claims over his conduct, including that he said he would rather see “bodies pile high’ than approve a third lockdown,
- Boris Johnson and No 10 strongly deny he said the phrase, as the PM describes multiple reports as “total rubbish”,
- Portugal registers no Covid-related deaths for 24 hours for the second time since the pandemic began,
- Its long lockdown helped slash infection rates to a fraction of the level in late January, when it had the worst Covid surge in the world,
- The US will share up to 60 million doses of its AstraZeneca Covid vaccine with other nations as they become available, the White House says.

[Access the BBC News, Latest LIVE Coronavirus news feed](#)

[Back to top](#)

Related Links:

Coronavirus: Why some people want to keep working from home

When lockdown started in March 2020, workers across the UK packed up their office equipment and set up workstations in their own homes. Bedrooms, kitchen counter-tops and dining tables became the new way of working for millions of people. But now it's time to return to those communal workplaces, research from Eskenzi suggests that 91% of the UK's office workers would like to work from home at least part of the time. So why are so many office staff keen to keep working from home?

Some of the reasons and case studies provided in this article and include -

- 'It's like getting a pay rise' due to making savings on the commute.
- 'We're spending more time together as a family', and
- 'I've seen an improvement in my mental health'.

[Access the BBC News article entitled, 'Coronavirus: Why some people want to keep working from home', in full.](#)

Coronavirus: How to be happier while working from home

This article from the Royal Institute of British Architects (RIBA) explains what we can do to keep us happier at home and include –

• Let in the light; • Shut out the noise; • Declutter; • Stand up; • Use plants; • and Social contact ... and not just online.

[Access the BBC News article entitled, 'Coronavirus: How to be happier while working from home', in full.](#)

[Access BBC News > Coronavirus > Coronavirus pandemic > Your Coronavirus Stories and related articles in full.](#)

[Access GOV.UK \(2021\) 'Coronavirus \(COVID-19\): what you need to know' \[online\]. Available at: \[www.GOV.UK\]\(http://www.GOV.UK\)](#)

More about coronavirus:

- A SIMPLE GUIDE: **[What are the symptoms?](#)**
- LOOK-UP TOOL: **[Check cases in your area](#)**
- MAPS AND CHARTS: **[Visual guide to the outbreak](#)**

The evolution of building surveying education during COVID-19

- In January and February 2020, as the pandemic was starting to gain momentum and spreading around the globe, universities in the UK were beginning to consider how to react. As a sector, UK higher education is relatively familiar with web-based methods of communication, teaching, and learning.

[Back to top](#)

In fact, the University College of Estate Management (formerly the College of Estate Management) and the traditional home of RICS correspondence courses, operates their business totally online.

A lot of universities operate a Virtual Learning Environment (VLE) which allows them to communicate with their students and provides the opportunity to interact with them in terms of online courses and assessments, and as a depository for learning materials.

This is allowing the students to revisit the materials to embed or reinforce their learning or to catch up if a session was missed. Common VLE's include Blackboard, WebCT, and Moodle. Their functionality and features are all relatively similar.

Although the physical libraries have closed, universities operate electronic libraries which offer access to a large number of electronic databases, and a growing number of books and journals, ensuring that the students and staff, can continue to access the majority of relevant information for their studies and research.

[Further information and access to the article 'The evolution of building surveying education during COVID-19', in full.](#)

[Access further information about UCEM's Supported Online Learning > e-Library.](#)

Will COVID-19 accelerate construction's digital transformation?

- With many industry professionals forced to work remotely, is now the perfect time for construction to get up to speed with all things BIM and digital? *Construction Manager* magazine finds out if the coronavirus will change the way we work forever.

David Philp – Global BIM/MIC consultancy director, AECOM says, **“It's an opportunity to rethink how we can use technology and innovate.” (Philp 2020)**

The coronavirus pandemic is forcing us to strive for more innovative and rapid solutions. From increased home working needs, maximising performance of our healthcare estates and ultimately how we can recover from the looming economic challenges, we need to usher in new ways of working.

This crisis will be an opportunity for us to rethink construction priorities, how we can better use technology and innovate in the use of joined-up data to support immediate societal needs and the creation of a more resilient built environment.

Mark Boyle – Global design direct, Robert Bird says, **‘Our digital processes lend themselves to remote working.’ (Boyle 2020),** and

[Back to top](#)

Gary Fannon – Technology director, Turner and Townsend says, **‘Early digital adopters will be reaping the rewards.’ (Fannon 2020)**

T&T’s technology team have all been set up to work from home for some time and the early adopters will reap the rewards from the coronavirus lockdown. Design teams are able to continue working – creating a fully designed digital model that can be constructed to an excellent quality standard when work is able to begin on site. There are also security questions about home working – we need to educate people and show them how to make home routers more secure. But overall, the enforced lockdown could show the industry how we can use digital technology to be more efficient and productive.

Andrew Gamblen – Digital manager, Willmott Dixon says, **‘People will become more comfortable collaborating remotely.’ (Gamblen 2020)**

The effect of Covid-19 and social distancing is going to have a long-lasting effect on both the construction sector and the UK as a whole. There has been a huge increase in the use of technology and software that allows individuals and teams to communicate and collaborate remotely.

While this technology has been around for a while, and because we are in a position where we have to use it to keep working, people are starting to become a lot more comfortable with it and this is building up simple routines that will have a lasting effect.

Richard Saxon – CBE Chairman of JCT, client adviser at Deplo BIM Strategies says, **“‘Wartime scenarios’ will push the digital agenda.’ (Saxon 2020)** The Covid-19 crisis is looking very like a war scenario. Organisations are sending out messages saying they will play their part through staff working from home. It’s Keep Calm and Carry on again.

Technology has always developed rapidly in wartime. The Second World War saw the birth of computing radar, jet aircraft and nuclear power. Now we have a design and construction industry in lockdown, starting to rely on tools which only a few firms have used to far.

- Now cloud-based teamwork applications allow staff to work from home or on the move with full access to their firm’s common data environment
- The pressure to roll out superfast broadband and 5G will be immense
- Social media apps allow for virtual co-working
- Online meetings are well supported now and soon we will use Virtual Site Visit technology as normal
- Site work will be aided by augmented reality headsets and BIM caves

[Back to top](#)

By the time a vaccine is available (see publication date), a year or more of forced advance in technology use is likely to have passed.

Things will not go back to where they were before: productivity will have improved; flexible working will have become normal; whole life thinking will have advanced.

[Read the *Construction Manager* article 'Will Covid-19 accelerate construction's digital transformation', in full.](#)

Related links:**What will the post-pandemic office look like?**

- Businesses have been scrambling to adapt their offices more Covid-friendly over the summer. But with remote working seemingly here to stay, anecdotal evidence suggests that firms are looking to cut office space by up to 40%. How is the workplace having to evolve to remain relevant?

[Read the *Construction Manager* article, 'What will the post-pandemic office look like?' in full.](#)

[Read the RICS article 'Coronavirus to weigh on Q1 construction activity, despite recent pick up', in full.](#)

Free content related to Coronavirus, the management of epidemics and the wider impact on society

© Emerald Publishing 2021

Emerald Publishing, one of the UCEM e-Library subscription services, have brought together a number of research resources related to the Coronavirus group of viruses, and epidemics more broadly.

Emerald collated research and the management of epidemics and made it freely available to assist practitioners and researchers who are working to tackle the current situation and likely consequences. Whilst these materials do not only relate to the current clinical challenges of Novel Coronavirus, but they may also provide relevant context to how the world reacted to other previous Coronavirus outbreaks (notably SARS) and epidemics.

[Access Emerald Publishing's 'Coronavirus, the management of epidemics and the wider impact on society'](#)

Covid-19 and the impact on business

© Henry Stewart Talks Ltd 2021

HS Talks - Interviews with academics and experts from the business community, on the impact of the Covid-19 pandemic, are

[Back to top](#)

now available in the HS Talks 'Business & Management' collection that UCEM subscribes to.

1. **[The impact of Covid-19 on organisations](#)**
2. **[The impact of Covid-19 on psychological safety in the workplace](#)**
3. **[The impact of Covid-19 on cybersecurity and data privacy](#)**
4. **[The impact of Covid-19 on tourism](#)**

[Shoosmiths UK law firm Insights and Articles](#)

- Read the latest insights, articles, and commentary from Shoosmiths UK law firm or explore their content library, or listen to the latest **Real Estate Podcasts** that include:

[VAT Reverse Charge to apply from 1 March 2021](#)

- The VAT domestic reverse charge is a major change to the way VAT will be collected in the building and construction industry.

[What 2020 has taught us about digitisation and data](#)

- The unexpected happened in 2020. The world shut down. Physical human interaction stopped and we had to go digital.

[The changing development agenda – North West](#)

- The north west sits high on the UK regional table for foreign investment, with numerous significant developments strengthening the region's reputation as being one of the UK's most progressive markets.

[Councils step up regeneration](#)

- Shoosmiths and *Property Week* assembled a panel of experts from across the real estate industry to discuss the growing role local authorities are playing in fostering regeneration in partnership with private sector partners.

[The future of build-to-rent market podcast series](#)**[Podcast – Government policy BTR \(Build to Rent\)](#)**

The future of the BTR market from Shoosmiths' Living team:

[Podcast series #1 – The future of BTR \(Build to Rent\)](#)

Issues discussed in this podcast include:

- Performance of the sector
- Rent collection rates
- Challenges of lockdown restrictions
- How buildings and amenity space will change as a result of the pandemic
- Where the market is going

[Podcast series #2 – The future of BTR \(Build to Rent\)](#)

Issues discussed in this podcast include:

- Ongoing attractiveness of the sector
- Top three things to look for in a BTR scheme
- Future challenges for BTR
- The role of technology

[Back to top](#)

- BTR housing

Podcast series #3 – The future of BTR (Build-to-Rent)

In this podcast, the last in this series, issues discussed include:

- Planning reforms
- Permitted development rights
- Rise of residential in the high street
- Fire Safety
- Rent controls / regulations

Cambridge University: All lectures to be online-only until summer of 2021

- There will be no face-to-face lectures at the University of Cambridge over the course of the next academic year due to coronavirus, it has been announced.

However, lectures will be available to students online and “it may be possible to host smaller teaching groups in person” if they meet social distancing requirements, the university said.

- **Students ‘must be warned if courses taught online’**
- **Online students would still face full tuition fees**
- **Students ‘being ignored’ over fee-refund claim**

The university watchdog said students applying for university places in England must be told with “absolute clarity” how courses will be taught - before they make choices. Universities can charge full fees even if courses are taught online. But Nicola Dandridge of the Office for Students warned against misleading promises about a “campus experience” if courses are to be taught online.

Read the article, ‘Cambridge University: All lectures to be online-only until summer of 2021’ in full and related item via the BBC website

Related topics / subject terms / keywords:

CORONAVIRUS

SOCIAL DISTANCING

**UNIVERSITY
OF CAMBRIDGE**

Learning and teaching reimaged: a new dawn for higher education?

- Exploring the 2020 experience as well as the changing aspirations of the nature and shape of learning and teaching for the future.

Summary - This report is the result of a five-month higher education initiative to understand the response to COVID-19 and explore the future of digital learning and teaching.

[Back to top](#)

In this report the experience of 2020 and changing aspirations of the nature and shape of learning and teaching for the next academic year, 2021/22, and 2030, are explored.

Recommendations - Based on this research the following recommendations for universities, sector agencies and government are made:

1. Universities to use their strategic and structural planning processes to affect the digital transformation of learning and teaching, ensuring that sponsorship is provided by governing bodies and executive teams
2. Universities to review their strategic investment in digital learning and teaching
3. Universities to make investment plans to mitigate the heightened cyber security risks that arise from greater dependence on digital technologies
4. Universities to think radically about the scale and scope of their learning and teaching activities, prioritising blended learning approaches wherever possible
5. Universities to accelerate the adoption of blended learning, with close involvement of students in all aspects from design to delivery
6. Universities to ensure inclusivity and accessibility are integral considerations in curriculum redesign
7. Universities to ensure their professional development plans include digital training, peer support mechanisms and reward and recognition incentives to encourage upskilling
8. Universities and sector organisations to establish research to remain in step with the changing digital preferences and expectations of prospective in higher education students
9. Universities, government and funders to provide additional funding or means to reduce digital poverty as a barrier to students accessing higher education.

Maguire D, Dale L, and Pauli M (2020) [*Learning and teaching reimagined: a new dawn for higher education?*](#) Bristol: JISC

Construction prepared for Brexit with new working group

The Construction Leadership Council (CLC) has set up the Brexit Working Group in a bid to produce and signpost business guidance and information to help the construction industry get ready and maintain business continuity at the end of the transition period. The group will also aim to identify critical issues facing the construction industry in the event of no agreement that the government should address before the transition period expires, as well as championing opportunities for the construction sector in the

[Back to top](#)

numerous ongoing trade deal negotiations with the EU and the rest of the world.

The work of the group will be split into four workstreams covering:

- **Movement of People:** preparing for the new immigration rules, accessing alternative labour supply and reciprocal arrangements on skills and qualifications in new trade deals
- **Movement of Goods and Materials:** preparing for the new customs regime, guidance on WTO rules in the event of no agreement with the EU and alternative sourcing opportunities in the rest of the world and the domestic market
- **Standards and Alignment:** guidance on the Construction Products Regulation, EU notified bodies, CE marking, UK designated standards, and UKCA marking
- **Data Adequacy:** business awareness of the potential impact and mitigating actions on data flow in the event of no agreement with the EU and no decision by the European Commission on the UK's 'data adequacy'.

In addition, the existing workstreams of the CLC will also take on Brexit – readiness related work, helping to produce guidance on matters including procurement and contracts.

[Read the Construction Manager article entitled, 'Construction prepares for Brexit with new working group' in full.](#)

New guidance from CIRIA - Construction Industry Research and Information Association

CIRIA is pleased to announce (**April 2020**) new [free CIRIA practice guidance](#) that include:

Code of practice for property flood resilience (C790) –

This new guidance provides confidence on the use of the standards within the code of practice that provides a benchmark for those procuring and delivering property flood resilience (PFR).

Retrofitting ground gas protection measure (C795) –

This guide dispels the myth of demolition being the only option for mitigating ground gas ingress into existing UK properties.

Grouted anchors and soil nails (C794) –

This guide addresses intrusive inspections beneath the anchor head, typically the critical section in respect of corrosion, outlines specialist techniques such as destructive de-stress and describes options for remediation and repair.

The Management of advanced numerical modelling in geotechnical modelling (C791) -

Numerical modelling is commonly carried out in engineering. Producing a numerical model is complex and if not used properly can be dangerous. However, if use with skill and care there can be enormous benefits. This guide provides a framework for those

[Back to top](#)

who oversee the process, provide the information needed for this task and use the results of the numerical modelling.

Methodology for quantifying the benefits of offsite construction (C792) -

This new guidance proposes a framework for comparing construction approaches, making it possible to keep consistent records across projects and identify all the possible benefits available. This guide also highlights the challenges that can be expected when assessing the performance of construction projects and developing robust benchmarks for comparison.

Grenfell Tower Inquiry – latest developments

- The Grenfell Tower Inquiry was created to examine the circumstances heading up to and surrounding the fire at Grenfell Tower on the night of 14 June 2017.

Phase 2 hearings – Hearings will resume on Monday 19 April at 10:00.

Remote Hearings / COVID-19 information – The Inquiry takes health and safety guidance extremely seriously. Following a full risk assessment, it has put in place arrangements to ensure social distancing is maintained in all parts of its venue. Full guidance can be accessed via the [Grenfell Tower Inquiry website](#).

Drop-in sessions – In line with current public health guidance on COVID-19, the Inquiry has postponed its monthly drop-in sessions until further notice.

Phase 1 Report – The Inquiry has published its report on Phase 1 of its investigations.

Latest update from the Inquiry [April 2021] - The Inquiry has published an update on the resumption of hearings. This update provides a digest of:

- **Hearings update** - The Inquiry has published an update on its plans to return to limited attendance hearings, • **March 2021 Newsletter** – The Inquiry has published an update on its work.

Read further information from the ‘Grenfell Tower Inquiry’ website.

Government’s £3.5bn cladding proposals ‘unacceptable’

- The extra £3.5bn promised by the government to remove unsafe cladding from high-rise buildings over 18m — or above six storeys — in England is ‘unacceptable’ in its current form, the Chartered Institute of Building (CIOB) has warned.

Housing secretary Robert Jenrick said the investment was the government’s “largest ever” in building safety.

The funding is in addition to a pot of £1.6bn announced last year and Jenrick told the House of Commons that no leaseholder would

[Back to top](#)

pay more than £50 a month if cladding on their building needed to be removed.

A new levy will be placed on future developments to pay for the fund. Jenrick also announced plans to introduce a new tax on the residential property sector from 2022 to help pay for the removal of cladding. It is expected to raise £2bn over a decade.

But the CIOB said more detail was still required and said it had already highlighted concerns about the impact of the proposals on leaseholders — particularly those in living in buildings under 18m.

The CIOB issued a call last week (see publication date) to the government to commit to acting immediately on finding a funding solution which does not penalise leaseholders and leave them “burdened with paying, even in part, for historical building safety remediation works”, while also ensuring that these costs are excluded from the proposed building safety charge.

The CIOB submitted evidence to the Housing, Communities and Local Government Committee’s pre-legislative scrutiny of the Draft Building Safety Bill last year and its recommendations were incorporated in the Committee’s final report. The government has not yet formally responded to this report.

Meanwhile, Jonathan O’Neill, managing director of the Fire Protection Association (FPA) criticised the government’s announcement and said funding should be put in place for all affected buildings – regardless of their height.

“The government must act now and support all leaseholders, in all affected buildings regardless of their height, with grants to bring this debacle to a close. It should then be on the government to pursue those responsible through the courts to ensure the money is fully repaid.”

[Further information and access to the *Construction Manager* article, ‘Government’s £3.5bn cladding proposals ‘unacceptable’, in full.](#)

Skills Agenda: Concerns for Skills Shortages in the 21st Century: A Review into the Construction Industry, Australia

The Australian Construction Industry is now facing skills shortages in all trades. As an industry focused on the skills of its workforce, there is now concern the Australian standard in quality, workmanship, and productivity will inhibit both national and international level.

This research paper addresses the underlying, influential factors concerning skills shortages in the Australian construction industry. The influential factors addressed include funding, training statistics, employer expectations, financial limitations, Industrial Relations and immigration.

[Back to top](#)

Given the reference to skills shortages within the industry, and documented in related literature if skills shortages are to continue to exist their effect will impact upon the overall performance of construction companies through Australia.



UTS ePRESS is Open Access and licensed under [Creative Commons Attribution 4.0 International Licence](#).

[Read the full research report 'Concerns for Skills Shortages in the 21st Century](#).

Tomorrow's Engineers



© EngineeringUK (2021)

Tomorrow's Engineers brings together resources and evidence to support the engineering community in getting the most out of their engagement activity. It includes information and guidance on a range of topics curated from across the STEM community. Developed by EngineeringUK, the new website is for anyone who funds or delivers engineering engagement activities and is designed to help improve the engineering community's collective impact.

[Access the new Tomorrow's Engineers website](#)

Women in construction: building a career in a challenging environment

12 case studies of women working in the construction industry and their experiences.

[Access Women in construction: building a career in a challenging environment](#)

RICS Market surveys – leading indicators in the real estate industry

Market surveys from the Royal Institution of Chartered Surveyors (RICS) include:

- [UK Residential Market Survey](#) – used by government and key institutions, the Resi. Market Survey is a key indicator of conditions in UK residential sales and lettings.
- [RICS/RAU Rural Land Market Survey & Land Prices](#) – The RICS/RAU Rural Land Market Survey is the leading survey on demand, supply and prices in the farmland market.
- [UK Construction and Infrastructure Survey](#) – The leading sentiment indicator of the UK construction and infrastructure markets.

[Back to top](#)

- **Hong Kong Residential Market Survey** – The Hong Kong Residential Market Survey is a leading sentiment indicator of conditions in the Hong Kong residential sales and lettings markets.

- **Global Commercial Property Monitor** – RICS global commercial property monitors are leading indicators of conditions in commercial property occupier and investor markets around the world.

- **UK Commercial Market Survey** – A leading indicator of developments in the UK commercial property occupier and investor markets.

RICS – The Future of Surveying

- We know the challenges facing the built environment and the surveying profession – now it's time to act. We know the challenges facing the built environment and the surveying profession – now it's time to tackle them.

For over 150 years, RICS has led our profession through change, enabling our members to take advantage of the opportunities and manage the risks it presents. This change is now happening faster than ever, requiring us to think strategically about how we deploy our expertise and resource. To continue to provide leadership, we are constantly assessing our role as a standard setter, regulator, educator, and global professional body – to deliver confidence to governments, markets, and the public.

RICS Futures Report 2020 is our action agenda to keep up in a changing world.

Access and download the Futures report to read RICS' full agenda for effecting change and responding to the biggest issues facing the natural and built environment, in full.

Read the article, 'Future of Surveying' and gain access to the Futures report in full.

GOV.UK, National Statistics - UK House Price Index [Last updated February 2021]

- The UK House Price Index is a National Statistic that shows changes in the value of residential properties in England, Scotland, Wales, and Northern Ireland.

The UK House Price Index (UK HPI) captures changes in the value of residential properties.

The UK HPI uses sales data collected on residential housing transactions, whether for cash or with a mortgage.

Properties have been included:

- In England and Wales since January 1995
- In Scotland since January 2004

[Back to top](#)

- In Northern Ireland since January 2005

Data is available at a national and regional level, as well as counties, local authorities, and London boroughs.

The summary report contains:

- Headline statistics
- The economic statement
- Price changes
- Sales volumes
- The property status
- The buyer status for Great Britain (excludes Northern Ireland)
- The funding status for Great Britain (excludes Northern Ireland)
- Housing transactions distributions

[Read the GOV.UK, Guidance: 'House Price Index', Published 14 June \(Last updated 15 February 2021\)' in full.](#)

Tackling mental health and wellbeing within the construction industry

Samaritans to work with roofers on mental health

- The National Federation of Roofing Contractors (NRF) is working with the Samaritans charity to explore ways of supporting tradesman in construction who may be struggling with mental illness.

The trade body is also supporting a Samaritan's campaign, Real People, Real Stories, which aims to support working-age men suffering from the impacts of the coronavirus lockdown.

The campaign aims to use real-life stories to reach men struggling to cope and encourage them to seek help.

[Read the *Construction Manager* article entitled, 'Samaritans to work with roofers on mental health' in full.](#)

Wellbeing strategy model:



Source: BSRIA (2019). 'Wellbeing consideration to property managers', Designing Buildings.co.uk Wiki [online], last edited 20 Aug.

Understanding Mental Health in the Built Environment

Access the CIOB's latest report *Understanding Mental Health in the Built Environment*, including the results from the CIOB survey of over 2,000 professionals.

[Back to top](#)

[Access CIOB online Policy Portal](#)

Access CIOB surveys the sector to gather data on mental health and stress

How can buildings have positive impact on wellbeing?

BSRIA's Henry Lawson discusses the importance of designing buildings that promote 'Wellbeing.' The theory sound compelling but in practice, creating such building is complex.

[Access and read 'How can buildings have positive impact on wellbeing' in full.](#)

Coronavirus and your wellbeing

You might be worried about coronavirus (also known as COVID-19) and how it could affect your life. This information is here to help. [Access MIND's article, entitled 'Coronavirus and your wellbeing'.](#)

Related Link and where to access further information support:

BBC Action Line [online]. Available at: bbc.co.uk/actionline
Telephone: 0800 066 066

Sustainable outcomes for buildings

The Royal Institute of British Architects (RIBA) has published guidance on targeting, designing, and evaluating sustainable outcomes for buildings, defining concise measurable set of eight sustainable outcomes that correspond to key UN Sustainable Development Goals and can be delivered on building projects of all scales.

[Access the RIBA Sustainable Outcomes Guide](#)

National Trust planning principles

National Trust (NT), a charity that works to preserve and protect historic places and spaces – for ever for everyone.

The National Trust protect historic houses, gardens, mills, coastline, forests, woods, fens, beaches, farmland, moorland, islands, archaeological remains, nature reserves, villages, and pubs. While they are very passionate about open spaces and historic places, they also work hard in other areas too, including the environment, food, farming, transport, and heritage – to name but a few.

Most of the work they do though is affected by much wider global issues, which is why their interests extend far beyond just bricks and mortar.

[Access the National Trust website](#)

National Trust (NT) – “Our planning principles”

The National Trust principles are used to guide them in their decision-making on the way land is developed and managed and include:

[Back to top](#)

Seeking to influence – The NT seek to influence the Planning system at local, regional, and national levels,

Supporting spatial planning – The NT support spatial planning which takes a holistic approach to its environment and its resources,

Sensible management – The NT promotes the wise management of the natural environment and built and cultural heritage,

Protecting our environment – The NT will seek to protect wild and remote landscapes from built development or urbanisation.

Using property management plans – In managing its land through management plans, the NT will support and help to achieve objectives,

Objecting to proposals, where appropriate – When proposing development on their land to meet justified needs, the NT will use a sustainable construction approach. This will include:

- Minimising resource use and generation of waste,
- Being energy efficient,
- Minimising or preventing all types of pollution and risk of flooding,
- Safeguarding important wildlife, landscape, and historic interests,
- Respecting local/regional distinctiveness, supporting local sources for goods and services where practical, and - Encouraging community involvement and access.

[Read the National Trust Planning Principles](#)

The National Trusts' planning procedure

The National Trust have developed the following criteria to ensure online suitable projects proceed:

- Adhere to the policies in the relevant local plan,
- Deliver energy efficiency and reduce carbon dioxide emissions,
- Build in harmony with the local environment, built and natural,
- Involve the local community throughout the process.

Case studies are provided.

[Read how the National Trust engage in planning: The NTs' role as a developer.](#)

Foster + Partners Projects

Foster + Partners Projects – one of the most innovative architecture and integrated design practices in the world. Over the past four decades the practice has pioneered a sustainable approach to architecture through a strikingly wide range of work, from urban masterplans, public infrastructure, airports, civil and

[Back to top](#)

cultural buildings, offices and workplaces to private houses and product design. By visiting their website, you can gain further information about their current and past work, upcoming projects, and gain access to their-

- Image gallery,
- Sketches and drawings,
- Construction,
- Facts and Figures, and
- Project downloads.

[Access Foster + Partners Projects](#)

New RIBA Plan of work 2020

RIBA Plan of Work 2020. This blog takes a look at the new RIBA Plan of Work 2020.

What is the RIBA Plan of Work? The RIBA Plan of Work was first published by the Royal Institute of British Architects (RIBA) in 1963. It originally provided a matrix to show the roles of participants in the design and construction processes.

It has since been updated in several editions, most recently in 2020. This has allowed it to adapt to the complexity of modern projects, industry demands and legislative and regulatory requirements.

It now provides a shared framework for design and construction, including both a process map and management tool.

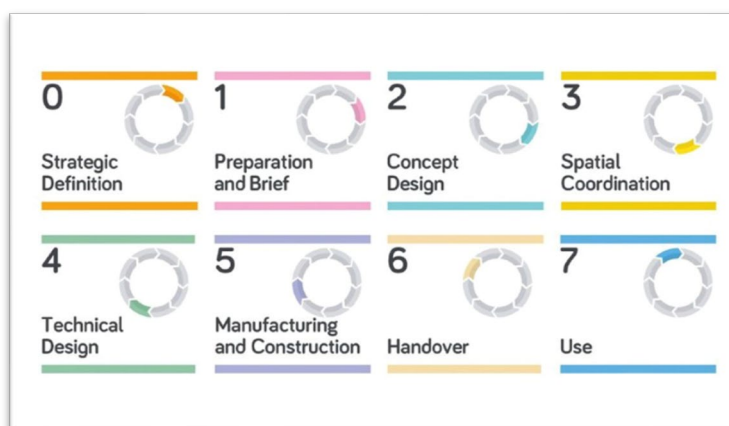
What changed in 2020? In 2020, key changes were made to reflect the importance of sustainability and Building Information Modelling (BIM) in construction. The Plan of Work now also incorporates issues such as digitisation of the industry, Modern Methods of Construction, ethical issues, the value of aftercare and timing relating to planning applications and procurement.

This has included restructuring and renaming of the work stages from the 2013 Plan of Work:

- 0 – Strategic definition** – no change
- 1 – Preparation and briefing** – brief amended to briefing
- 2 – Concept design** – no change
- 3 – Spatial coordination** – formerly Developed design
- 4 – Technical design** – no change
- 5 – Manufacturing and construction** – formerly Construction
- 6 – Handover** – formerly Handover and close out
- 7 – Use** – formerly in use

[Back to top](#)

RIBA Plan of Work 2020:



© RIBA 2020

Source: Royal Institute of British Architects (2020) 'RIBA Plan of Work'

Note: The author of this blog, Jen Lemen-Hogarth is an Associate Tutor – UCEM and Partner – Property Elite.

[Access Property Elite's, Building Better Property Professionals, 'New RIBA Plan of Work 2020' \[Blog\], in full](#)

Autodesk and CIOB map the digital construction journey

Autodesk and the Chartered Institute of Building (CIOB) have prepared an infographic to help construction businesses visualise their position on the digital journey.

[Access more information, view the infographic and read the article, entitled 'Autodesk and CIOB map the digital construction journey' in full.](#)

[Access further information from CIOB 'Digital Construction'](#)

- Digital technologies are now an integral part of our built environment. The choice is not when or if built assets will use technology, but rather how much will be used.

Building Information Modelling (BIM)

Step-by-step guide to using BIM on projects



Source: PCSG (2019) '[Step-by-step guide to using BIM on projects](#)', Designing Buildings Wiki [online] Last edited 5 April.

This step-by-step guide explains how level 2 building information modelling (BIM) can be used for the development of a built asset such as a new building.

[Access the Step-by-step guide to using BIM on projects](#)

[Back to top](#)

Latest BIM+ News and Projects [April 2021] –

- **Project: Modelling key to Boeing's new maintenance hangar at Gatwick, 19th April 2021.**

- Forming part of Boeing's strategic plans to expand its Global Fleet Care Service, the construction of a new Boeing hangar at Gatwick was a significant project, with digital technology and BIM at the heart of its successful delivery.

Client: Boeing; **Architect:** D5 Architects; **Lead design consultant:** Matt MacDonald; **Structural steelwork contractor:** JD Pierce

Designed by D5 Architects and measuring 150m by 95m, approximately the same size as two football pitches, the construction of the new Boeing hangar at Gatwick required around 3,000t of structural steelwork. Designed to enable the maintenance of the 787 Dreamliner and 737 Max, the hangar is also intended to provide future accommodation for the new 777-9, set to be Boeing's largest and most efficient twin-engine jet plane and larger than a 747.

Appointed as the lead design consultant on the project, Mott MacDonald was contracted to deliver the structural, civil, infrastructure and MEP design, while structural steelwork JD Pierce was tasked with detailing and fabricating the hangar's steel frame. They both turned to Trimble's suite of Tekla software for support.

Mott MacDonald carried out the main steel frame analysis in Tekla Structural Designer, with a hybrid of braced and portal frame with a notch-back profile.

Also covered within this article are the following subject areas:

- **Designing structural stability –**

In further considering the installation sequence once elements were delivered to site, efforts were made during design stages to develop a design that would allow the permanent stability system to be achieved early during construction. This was aided by the positioning of the plan and elevation bracing.

- **Evaluating connections in the model –**

Another challenge on the project, was regarding the steel connections. Given the height of the hangar's steel support columns, some were to be fabricated as two separate components, before being bolted together on site. Originally, the columns were designed with cover plate connections. We were able to model the stability of each connection in the software and determine which connection was most suitable in terms of performance and efficiency.

[Back to top](#)

Other BIM+ Projects include:

- **Project: BIM the best solutions for historic chapel relocation**, 31st March 2021.

- Relocating a Victoria chapel from its current position in a hospital building due for demolition to its position in a new building would be tough enough, but the 50mm tolerances making the challenge tougher, contractor DBR turned to technology.

Client: Brighton and Sussex University Hospitals NHS Trust; **Chapel project contractor:** DBR (London); **Main contractor:** Laing O'Rourke; **Conservation architect:** Cowan Architects; **Conservation engineer:** SFK Consulting; **Principal architect:** BDP; **BIM specialist:** Murphy Geospatial.

- **Project: How Wates maintained progress on Nottingham college project**, 31st January 2021.

- Among the 50 live Wates Construction sites shut down by the first covid-19 lockdown was the Nottingham College City Hub. Once allowed to re-open the site, Wates turned to cloud-based project management software to help maintain progress once work could continue on site.

Client: Nottingham College; **Architect:** Bond Bryan; **Main contractor:** Wates Construction

- **Project: How BIM drove redevelopment of a Dublin office**, 22nd January 2021.

A significant redevelopment of an office building in Dublin was helped by BIM software, which the project team used to communicate the design and its challenges to stakeholders, the client, and the supply chain.

Client: Aviva Ireland; **Architect:** Lafferty Architects; **Project manager:** Lafferty Project Manager; **Main contractor:** Collen Construction

- **Project: D-Day memorial uses 3D Tekla modelling**, 11th January 2021.

With a cantilevered roof canopy forming an integral part of the new resting place for a unique piece of tank history, Hillcrest Structural used Tekla Structures' 3D model environment to help design, detail, fabricate and erect the steel support structure at the D-Day Story museum in Portsmouth.

Architect: Pritchard Architecture and Mann Williams; **Main contractor:** Ascia Construction; **Specialist steelwork contractor:** Hillcrest Structural

- **Project: Hard hat cameras ensure Claridge's project runs smoothly**, 3 September 2020.

[Back to top](#)

Northern Ireland contractor Mastercraft has been using Oculo's hard hat camera site-scanning equipment to monitor progress on its work at Claridge's Hotel in Mayfair, London.

Oculo's 360-degree video camera is mounted on a hard hat to record progress each week during a usual site inspection. The system creates a virtual copy of the site that is navigable via an online platform, allowing users to zoom in on areas of interest and pin notes in the virtual space, meaning they can log RFIs, snags and notify clients or contractors about specific issues. Mastercraft adopted the technology when the Covid-19 travel ban came into force, meaning its project manager was unable to leave Belfast to visit the site.

Social distancing regulations also meant that other professionals on the project, such as the QS and design team, could carry out inspections and valuations remotely.

BIM in action: 2020's top five projects

22 December 2020

- Hospitals, housing, hotels: BIM+ covered case studies of BIM in action in all sorts of construction projects across the world. Given what happened in 2020, it's not surprising that three of the most read case studies focus on hospitals.

2020's top five projects (and all covered within this and previous issues of *Knowledge Foundations*) incl.

1. [Sisk reap rewards of high-tech approach at Wembley](#)
2. [Finland's Hospital Nova uses VR to involve staff in building](#)
3. [NHS Nightingale Hospital, East London – how BIM played its part](#)
4. [Mace uses AI tech on Mayfair project to meet covid-19 safety challenges.](#)
5. [AI tracks work quality at Norway's Stavenger Hospital.](#)

[Access BIM+ that include project entitled, 'BIM in action: 2020's top five projects' available in full.](#)

Related BIM+ Projects

- **(1) Project: [John Sisk relies on BIM best practice to deliver Malmo data centre](#), 2nd November 2020.**

- John Sisk & Son is nearing completion on a data centre project in Malmo, Sweden. Adopting BIM best practice has been crucial to keep construction on programme given a fast-tracked programme amid the Covid-19 pandemic.

The Multinational Data Center [sic] in Malmo will house and run a vast array of networks and servers for massive data processing and storage. That means state-of-the-art M&E

[Back to top](#)

installations and precise attention to the smallest of details for construction and handover are necessary.

The John Sisk & Son team has nearly 40 years of experience in data centre construction and has brought a digital project delivery approach to the Malmo project.

Sisk highlights some significant outcomes:

- The Sisk team-built dashboards that stored live clash trend reports to track progress weekly, resulting in a 50% efficiency increase in the BIM management process compared to traditional, manual methods of construction coordination without the automating power of the cloud.
 - The tight integration between BIM 360 Docs, Microsoft Power BI, and Sisk's own "Design Changes Control" dashboards provided the commercial teams with a faster way to visualise the cost and/or schedule impacts, reducing the overall take-off by a potential 40%
 - By using BIM 360, the project continued uninterrupted as construction continued in Sweden during the Covid-19 pandemic.
- **(2) Project: Finland's Hospital Nova uses VR to involve staff in building, 28th April 2020.**
Lead Contractor: The Central Finland Health Care District

BIM Tools: Tridify
- Innovative processes have been used in the co-design of Finland's new Hospital Nova using BIM models and involving more than 350 staff.
 - **(3) Project: NHS Nightingale Hospital, East London – how BIM played its part, 5th May 2020.**

Client: Barts Health NHS Trust, Royal Free London NHS Foundation Trust
Lead Contractor: Lead Designer: BDF
BIM Tools: Autodesk Revit
- The UK's newest (see publication date) and largest hospital, based at the ExCel conference centre in London's Docklands, is designed to care for up to 4,000 people affected by Covid-19. The hospital is now in standby mode and will be used should cases in the London area rise again.
 - **(4) Project: Mace use AI tech on Mayfair project to meet Covid-19 safety challenges, 1st October 2020**

- Work was already underway on Lodha's No 1 Grosvenor Square flagship project when the lockdown and then social distancing added to the normal construction challenges.
Client: Lodha; Main contractor: Mace
Balancing the many requirements of a building project – cash flow, cost, quality, and timelines – is always a significant

challenge for project leadership. The Covid-19 pandemic made the balancing act even more intense, costing projects valuable time at the start of lockdown and requiring adjustments to ensure the health and safety of all personnel on site as production restarted.

- **(5) Project: AI tracks work quality at Norway's Stavanger Hospital**, 21st June 2020.

Client: Stavanger University Hospital
 BIM Tools: 100% International open standards, compatible with Revit, ArchiCAD, Solibri and others
 - Oslo-based BIM developer Imerso has been given responsibility to monitor work progress in one of the biggest public construction projects in Scandinavia.

[Access the Chartered Institute of Building's \(CIOB\), BIM+ articles, projects, case studies and more, in full.](#)

Latest BIM news – 10th annual BIM report 2020 available
NBS 10th National BIM Report 2020 - The 2020 annual BIM report marks the 10th year of recording over 1,000 industry professional's view about BIM. It illustrates how usage and perceptions of BIM have changed since 2011, progress made as an industry, and anticipated changes in the next decade.

Construction Information Service (CIS) Insights

The latest edition [**March 2021**] of NBS CIS *Insights* focuses on – **Post-Brexit conformity marking and designated standards; how the new rules affect you and covers:**

- Understanding new terminology,
- How CE, UKA and UKNI marking works, and
- UK Designated Standards and hENs

[Back to top](#)



Built Environment Research

Latest Policy and Research from:

1) Savills *Impacts – The Future of Global Real Estate*

- Market Trends: Savills.com

In-depth research and analysis into property market trends, forecasts from specialist research teams, and market leading commentary to help you make the right property decisions.

More than 10 years on from the global financial crisis (see publication date), Savills explore debt, interest rates and credit cycles. Which real-estate markets were resilient or have since recovered (but may now be vulnerable to a downturn), and which still have prospects for growth? How are tax policies affecting investment? Savills take a look at the prospects for real estate and how changes in the world economy impact it's future.

[Back to top](#)

Impacts: Real estate investment in 2021: global outlook

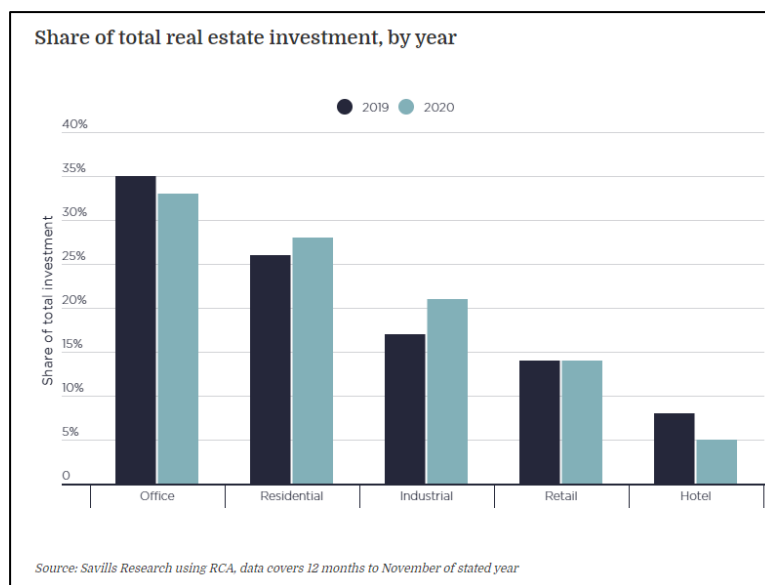
- Savills examine the global trends and in-demand assets for 2021

After the exceptional challenges brought by Covid-19, the distribution of a vaccine brings new hope for 2021. Sustained economic recovery is now on the horizons, led by advanced economics where vaccines are being introduced first. This should fuel wider real estate investor confidence.

Global GDP growth in 2021 is forecast to be the fastest in 40 years, according to Oxford Economics, albeit only enough to return global GDP to pre-crisis levels. Many advanced economics have take a ‘whatever it takes’ approach to supporting economies, with ultra-low interest rates and quantitative easing programmes.

These low interest rates will support real estate investment into 2021. Unlike during the global financial crisis, banks today are less geared, while non-bank lenders have expanded significantly. This provides borrowers with greater options in the recovery. Travel restrictions and broader economic uncertainty led to a fall in deal volumes in 2020. In the 12 months to November 2020, global investment volumes were down by 28% compared to the same period in 2019. Not all sectors felt this equally. The industrial and residential sectors saw more modest falls in volumes, gaining market share to capture 21% and 28% of total investment, respectively, as shown in the graph on the next page.

Share of total real estate investment, by year



Source: Savills (2021) *Real estate investment in 2021: global outlook* [online].

The resilience of these sectors, from left to right and include – **Office, Residential, Industrial, Retail and Hotel**, in the face of structural change means that is a trend likely to continue to 2021.

In spite of near-term uncertainty, the long-term appeal of real estate has held for investors, and the number of funds targeting it

[Back to top](#)

have continued to rise. As of the beginning of Q4 2020, there are more than 1,000 funds in market – more than double the number in January 2016, according to Preqin. Funds are now targeting almost \$300 billion of investments. This suggests investor momentum moving into 2021.

Other areas covered in this research include **The Green Agenda** (covered later within the UCEM Sustainability Hub), and

SAVILLS Sector investment outlook for 2021

- The Pandemic accelerated a shift to online retail and flexible working patterns. In 2021, logistics is expected to be the major beneficiary, but the challenge for investors will be funding stock.
- Office is forecast to remain the largest sector and the core investment of choice. Emphasis will be placed on lower-risk assets with stable income characteristics in the best locations.
- Residential may attract a growing share of global investment, supported by strong underlying fundamentals and cross-border investors growing and consolidated portfolios.
- Senior housing and healthcare are operational asset classes with long-term income potential. Ageing populations and emphasis on health and wellbeing is expected to support expansion.
- Data centres are a rising alternative sector and offer opportunity for portfolio diversification. Yields are attractive and pent-up demand is likely to fuel growth in 2021, but barriers to entry are high.
- 2020 brought life sciences to the fore. A big increase in capital raising is forecast to spur real estate investment opportunities in a sector resilient to changes in working habits.

[Read the Market Trends – ‘Real estate investment in 2021: global outlook’, in full.](#)

Read Savills Investment tips and trends by region -

- [Read more EMEA tips](#)
- [Read more Asia-Pacific tips](#)
- [Read more North America tips](#)

Also: [Read Savills World cities prime residential forecasts](#)

[Read the latest Issue – 3, 2020 of *Impacts: The Future of Global Real Estate*, in full.](#)

In earlier issues (05/20) Savills discuss the potential changes that may be seen across the different sectors. If you prefer to read a specific sector, then select the relevant sections title to go straight there and include: **Office sector**, **Logistics sector**, **Retail sector**, **Hotels sector**, **Institutional residential sector**, **Senior housing and healthcare sectors**, **End-use residential sector**, and **Conclusion**.

[Back to top](#)

[Read the full Savills Impact Publication 'The Impact of Covid-19 on real estate', 2020'](#)

[Savills \(2020\) 'Welcome to Impacts 2020' *Impacts*, May, Savills \[online\]. Available at Savills.com](#)

[Savills \(2020\) 'The impacts of the US-China trade war', *Impacts*, May, Savills \[online\]. Available at Savills.com](#)

[Savills Covid-19 Resource Hub](#)

[2\) Joseph Rowntree Foundation \(JRF\) -](#)

- Inspiring Social Change: The Joseph Rowntree Foundation is an independent social change organisation working to solve UK poverty.

UK Poverty 2020/21

Related topics – Housing; Work; Income and benefits

- This is the 2020/21 edition of the JRF's annual report on the nature and scale of poverty across the UK, and how it affects people struggling to stay afloat.

We are in the midst of the coronavirus storm – a turbulent time when all of us have felt insecurity and instability. But our analysis shows too many of us entered the pandemic already at risk of being cast adrift into poverty, while often lacking secure housing, a reliable income or adequate support. It also shows that those of us already struggling to keep our heads above water have often been hit the hardest. Our response to the pandemic should be measured by how just and compassionate it is to people in poverty, whether they were already experiencing hardship or have been swept into it.

This report highlights early indications of how poverty has changed in our society since the start of the coronavirus outbreak, as well as the situation revealed by the latest poverty data, collected before the outbreak. It examines overall changes to poverty, with sections looking at the impact of work, the social security system and housing. It also benefits from powerful insights from members of our Grassroots Poverty Action Group, who have direct experience of living on a low income.

Recommendations:

- We need as many people to be in good jobs. Unemployment is expected to rise in the coming months, and we need to see further bold action to retrain workers and create good quality new jobs
- We need to improve earnings for low-income working families and ensure more people are in secure, good quality work. Government must support people in the lowest-paid jobs, or people working part-time, to move into higher pay and access sufficient and secure working hours, including bringing forward the Employment Bill.

[Back to top](#)

- We need to strengthen the benefits system. At a minimum, we need the temporary £20 per week increase to Universal Credit and Working Tax Credit to be made permanent, extending this same lifeline to people on legacy benefits such as Jobseeker's Allowance and Employment and Support Allowance.
- We need to increase the amount of low-cost housing available for families on low incomes and increase support for households who have high housing costs.

[Read the JSR report entitled, 'UK Poverty 2020/21' in full](#)**Related Links:**[Read the article 'UK Poverty 2019/20 Housing' in full](#)[UK Poverty Statistics from the Joseph Rowntree Foundation -](#)

The latest UK poverty data, statistics and analysis from JRF's Analysis Unit. This **online toolkit** can be used to find information about poverty rates and related issues in the United Kingdom.

[JRF Spring Budget 2021 analysis](#)[JRF Analysis of the 2020 Spending Review](#)

3) The Smith Institute

- The Smith Institute is a leading independent 'think tank' which promotes progressive policies for a fairer society. They provide a high-level forum for new thinking and debate on public policy and politics. Through research, reports, briefings, monographs, events, lectures, education, and their website, the Institute offers a platform for thought leadership on a wide range of topics.

A National Housing Conversion Fund: buying properties to boost affordable housing supply September 2020

The Smith Institute's Affordable Housing Commission published a report into the national housing conversion fund. The report examines two main ways a ring-fenced National Housing Conversion Fund could be achieved. The first is targeting funds to purchase homes on the secondary (existing) market. It examines which housing markets – in broad terms – the investment might be best aimed at, factoring in how it could help improve housing condition and support jobs and growth.

This option could be weighted to support weaker housing markets by providing a floor for the market and helping those struggling and desperately needing to sell. Funding could be made contingent on investing in a property to raise standards. By focusing on low demand housing areas, a higher proportion of the investment would target jobs and growth rather than land costs in high demand places, where the economic rationale is weaker.

The second aspect concerns additional funding for social landlords to purchase homes for sale being built by housebuilders and

[Back to top](#)

converting them to social and affordable housing. With sites stalled and the prospect of construction workers losing their jobs, this approach would meet the strategic objective of making more housing affordable, as well as the shorter-term goal of supporting the recovery. It would also ensure that capacity and capabilities within the housebuilding industry is not lost due to the downturn but retained for when a recovery materialises.

The overarching case for a National Housing Conversion Fund rests not only on the urgent need to increase social and affordable housing and rebalance the housing system, but also as a quick and cost-effective way of supporting the economy as we move forward from – what we hope – is the worst of the pandemic. And, as demonstrated in this report, such a scheme could also improve housing conditions and contribute to the government's strategic ambitions to level up the economy and reduce carbon emissions.

[Read the full piece of research, 'A National Housing Conversion Fund: buying properties to boost affordable housing supply'](#).

Falling behind: The impact of Universal Credit (UC) on rent arrears for council tenants in London

July 2020

This report was commissioned by Southwark Council, with the support of eleven other London local authority landlords and coordinated by London Councils. The research and report focus on two main questions:

- How has the roll-out of Universal Credit (UC) affected rent payment behaviours among residents in local authority-owned housing across London?
- How are identified changes in behaviour – or the absence of behaviour change – affecting the tenancies of those tenants who are receiving housing cost support under the new arrangements?

This research was commissioned against the backdrop of growing evidence of the impact that UC is having on rent payment behaviour and rent arrears, as well as broader concerns about how it is affecting the financial wellbeing of recipients. Much of the previous research in this field has focused on one or two housing providers. The intention of this research was to understand what the overall impact might be across multiple providers and locations. To achieve that objective the research covered 12 participating London boroughs, who collectively own over 210,000 homes – 13% of council housing in England. 1 Including data from these 12 boroughs also offered a larger sample of cases.

The study examined those making a new claim for the housing element of UC during a three-month period (July-September 2019) in the 12 London boroughs with final rental data running until December 2019. This falls after the roll-out of Universal Credit full service to all parts of London, which was completed by December 2018. It also follows a series of reforms made in 2018, including the abolition of the seven-day waiting period and the introduction of a two-week Housing Benefit (HB) run-on.

[Back to top](#)

The report tells this story of financial stress through analysis of tenant rent accounts. The scale of the costs to social landlords is also apparent in escalating arrears after tenants make an effective UC claim.

By examining this impact and tracing rent behaviour over time, the analysis points towards what kind of reforms might be needed to improve UC to the benefit of both tenants and social landlords which are presented in the report.

[Read the full piece of research, 'Falling behind: The impact of Universal Credit on rent arrears for council tenants in London'](#).

Consumer Rights in the Private Rented Sector

July 2020

People who rent from a private landlord are at the sharp end of the housing crisis, but the truth is we have often more rights as consumers when we rent a car, buy a fridge-freezer, or take out a loan than we do as private renters.

This has been reinforced during the coronavirus crisis, with people spending more time at home and many realising just how precarious their housing situation is.

This report sets out a new perspective on how we can improve the private rented market: by recognising the consumer rights we're used to having in other markets, from utilities to financial services, and looking at how we might apply those lessons to the private rented sector.

[Read the full piece of research, 'Consumer Rights in the Private Rented Sector'](#).

All things being equal: The final report and recommendations of the Enfield Poverty and Inequality Commission (EPIC)

January 2020

- This report presents the findings and recommendations of the Enfield Poverty and Inequality Commission. The Commission, chaired by Baroness Tyler of Enfield, was made up of a mix local and national stakeholders and experts and was supported by the Smith Institute.

To undertake a review of poverty and inequality in Enfield and set out recommendations, the Commission:

- Initiated a 'call for evidence' to understand the views of local people and organisations. A feedback account was set up and promoted and comment boxes were placed in Enfield's four hub libraries for member of the public to submit evidence.
- Considered relevant existing datasets across a range of available evidence bases.

[Back to top](#)

- Engaged directly with local people, service providers, community organisations and businesses, through public meetings, focus groups, and one-to-one interviews.
- Considered best practice that has successfully been taken forward in Enfield and elsewhere that may be replicated or adapted for wider use.
- Held four Commission meetings to hear evidence on the three threads with follow up discussions.
- A deliberative ‘solutions workshop’ at Green Hall Community Centre in Edmonton, inviting organisations and members of the public who had engaged with the Commission to come together and formulate recommendations.

The Commission’s work focussed on three inter-connecting themes. These were:

- Living: To what extent does who we are and where we live affect our life chances and the services we can access?
- Learning: What barriers prevent local people from accessing opportunities through education and training?
- Earning: How can people on low incomes be better supported to secure long-term economic prosperity?

[Read the full piece of research, ‘All things being equal: The final report and recommendations of the Enfield Poverty and Inequality Commission’.](#)

Safe as Houses 3: Have government reforms to Universal Credit reduced the rent arrears of Southwark's tenants?

- This report was commissioned by the London Borough of Southwark. The aim of the report is to better understand the impact that Universal Credit (UC) has had on the rent payment behaviour of the borough’s own social housing or “council” tenants.

The report focuses on two main questions: first, whether there has been an improvement in rent payment behaviour since reforms to UC were introduced in 2018; and second, to see what the impact of UC has been long after tenants have transitioned onto the new benefit.

[Read the full piece of research, 'Safe as Houses'.](#)

4) CBRE Research Blog: About Real Estate

The CBRE Research blog showcases a variety of informed viewpoints, spanning all major property sectors that include –

- **Offices** – Discover up to the minute and future looking trends in the Office sector for occupiers, landlords, investors and developers
- **Retail** in detail,
- **Industrial** – CBRE ‘shed’ light on all things industrial,

[Back to top](#)

- **Residential** – CBRE’s ‘house’ vide on all things residential, and
- **Investment** – addressing the challenges and opportunities facing commercial real estate property investors

[Access the CBRE website and About Real Estate Research Blog](#)

5) CABE – Chartered Institute of Building Engineers

Two new publications have been launched from the Competence Steering Group (CSG) in 2020 with the view to improving competence and driving culture change throughout the industry.

Setting the Bar – a blueprint to improve competence for those working on higher risk buildings and drive culture change has been set out by a cross-industry group representing more than 150 organisations, including CABE, in the fire and built environment industries.

Setting the Bar is the second and final report of the CSG and is an update of its Interim Report, *Raising the Bar* published in August 2019. The work was initiated by the recommendations in Dame Judith Hackitt’s review *Building a Safe Future*.

[Access *Setting the Bar* – Final Report](#)

Competence Requirements for new role of Building Safety Managers

The competence requirements for the proposed new role of the Building Safety manager has been set out in a new 2020 report ***Safer people, safer homes: Building Safety Management***.

Under new legislation being introduced in the *Draft Building Safety Bill* published in July 2020, those deemed responsible in law for the safety of higher-risk buildings, such as the landlord, will be required to appoint a Building Safety Manager.

The role of the Building Safety Manager will be to look after the day-to-day management of fire and structural safety in higher-risk buildings and establish a clear point of contact for residents for fire and safety related issues.

[Access *Safer people, safer homes: Building Safety Management*](#)

[Access the Chartered Association of Building Engineers for further information.](#)

[Access *Building Engineer* website](#)

[Back to top](#)

6) RICS – Royal Institution of Chartered Surveyors

- RICS recognise the huge importance of property, land, construction and the built environment. Through their market surveys and research, they aim to advance the thinking of the profession and raise the profile of the industry.

Note: Latest research published by RICS is covered earlier within *Knowledge Foundations* and under **Other News > RICS Market Surveys**.

As of **April 2021**, the **latest news & insights** include:

- **Celebrating the contribution of female surveyors to construction**
- Updates to PII Minimum Policy Wording
- Private housebuilders' cost continue to increase
- 1Q21 estimate of Tender Price Inflation
- Identify, representation and diversity
- **Go to the new UK guidance note on residential properties with cladding**
- **The effect of Brexit on UK construction**

7) CIOB – Chartered Institute of Building

The quality of the built environment effects every member of society. As a professional body that represents the leaders and managers who work at every stage of the lifecycle of a construction project, The CIOB seek to influence government, industry and other stakeholders around the world with the aim of promoting the construction management discipline and addressing the challenges that the sector faces.

As of **April 2021**, the latest CIOB Policy and Research include:

- **Future of Construction research** – *Aiming the Construction Industry for the Future: Recruiting from the military into construction*. Also access the latest Future of construction NEWS - **CIOB Policy Team Newsletter – March 2021**
- **Ethics research** – *Understanding Mental Health in the Built Environment*,
- *Construction and the Modern Slavery Act: Tackling Exploitation in the UK*,
- *The State of Well-being in the Construction Industry*,
- *Building a Fairer System: Tackling modern slavery in construction supply chains*,
- **Economics and social impact research** – *The Real Face of Construction 2020: Socio-Economic Analysis of The True Value of The Built Environment*
- **Education and skills research** – *Exploring the impact of the ageing population on the workforce and built environment*
- **The Wider Built Environment** – *Understanding the Value of Professionals and Professional Bodies*.

[Back to top](#)

[Access the Chartered Institute of Building's Policy and Research website](#)

8) House of Commons Library, 9) the House of Lords Library and 10) the Parliamentary Office of Science and Technology (POST)

About the House of Commons Library - The House of Commons Library is a research and information service based in the UK Parliament. Their impartial analysis, statistical research and resources help MPs and their staff scrutinise legislation, develop policy, and support constituents.

[Watch this quick video to find out how the House of Commons Library works](#)

Source: UK Parliament (2020) 'How the House of Commons Library works', YouTube [video]. Available at: youtube.com

As of **April 2021**, the House of Commons Library has recently updated their website that is now broken down into the following sections or subject areas:

Services that include Research, Resources, Training & Events,

Brexit that covers Legislation, Negotiations, Policy, The EU, and Brexit explainer videos,

Coronavirus – read the latest Coronavirus (COVID-19) research and analysis from UK Parliament.

Economy, Business and Transport that include Business, Economy, Economic Updates, Transport, and Work & Incomes,

Home Affairs incl. Communities, Crime, Family & Civil Law, Justice, Immigration, Security, and Culture, Media & Sport,

Parliament & Elections that include Devolution, Elections, Government, Parliament, and Local Government,

Science, Environment and Technology that include **Energy, Environment, Climate Change**, Sciences, **Local Data**

Social Policy that include **Education**, Families & Social Services, Health, **Housing & Planning**, and Welfare & Pensions,

World Affairs that is broken down into Africa, Americas, Asia Pacific, Defence, Europe, Institutions, and Middle East, and more.

As of **April 2021**, the latest House of Commons Library, [Research publications](#) incl.

1. The coronavirus timeline: Measures taken by the House of Commons
2. Plastic Waste
3. Who can vote in the UK elections?

[Review House of Commons Library, Research for this week](#)

[Back to top](#)

As of **April 2021** the latest **House of Commons Research**:

Under '**Education**' and within 'Social policy', the top research briefings incl.

1. Coronavirus: HE/FE return to campus in England 2021,
2. Transport provision for post-16 students in England,
3. The Turing Scheme,
4. Oxbridge 'elitism',
5. Free speech in universities: What are the issues?

Under '**Housing and Planning**' and within 'Social policy', the top research briefings incl.

1. Extending home ownership: Government initiatives
2. Housing Market: Key Economic Indicators
3. Stamp duty land tax on residential property
4. Constituency data: house prices
5. Coronavirus: Support for landlords and tenants

Under '**Energy**', '**Environment**' and '**Climate change**', and within 'Science, Environment and Technology' include:

1. Green Homes Grants
2. Energy bills and tariff caps
3. Environmental Bill 2019-21: Report on Committee Stage
4. Integrated Review 2021: and Summary,
5. The UK-EU Trade and Cooperation Agreement: Fisheries; and Summary and implementation, and
6. Reading list of UK and devolved Parliament and Assembly publications on the UK's withdrawal from the European Union and UK-EU future relations.

House of Commons Library search on '**construction industry**' identifies 18 key documents, that incl. 'Taxation in the construction industry', 'CITB – Construction Industry Training Board Levy', and '**The construction industry: statistics and policy, December 2019**' -

Abstract: Construction industry – employment, new orders, output. **Construction 2025**, **The Farmer Review** and the **Construction Sector Deal** (part of the government's **Industrial Strategy**).

Key statistics – In 2018, the construction industry contributed £117 billion to the UK economy, 6% of the total.

Economic output in 2018 was slightly down on 2017, the first fall since 2013.

There are 2.4 million construction industry jobs in the UK in Q2 2019, 6.6% of all jobs. There are more constructions jobs now than at any time since 2007, although throughout this period, roughly the same proportion of jobs have been in construction.

The construction industry is unusual because of the high proportion of self-employment in the sector – 36% in Q2 2019, compared to the average for the whole economy of 13%.

New orders to the construction industry were worth £61.7 billion in 2017. This is 13% down in 2017, the first fall since 2011. New housing orders accounted for 35% of all construction orders, commercial orders accounted for 25% and infrastructure orders accounted for 19%.

[Access and download the full report, 'Construction industry: statistics and policy'](#)

[Back to top](#)



Property and Construction Statistics

Latest Property and Construction Statistics from RICS:

UK Economy and Property Market Chart Book, Q4 2020

- Output is likely to drop again in the last quarter of the year.

Following a pick-up in Q3, GDP is likely to drop again in Q4 –

Output across the UK economy recovered by 15% in Q3 according to the latest estimates from the Office for National Statistics (ONS). Despite this being a record quarterly increase in GDP, aided by an easing of lockdown measure over the summer (2020), it still leaves the total level of output 8.3% below where it stood prior to the pandemic back in February. Moreover, with England entering a second lockdown at the start of November, the economy will undoubtedly suffer a further setback on its road to recovery this month (see publication date). That being said, current restrictions are not quite as stringent as those imposed back in March (schools will remain open for instance), meaning the contraction in economic activity this time round is expected to be much smaller than that seen during Q2.

Also covered in this **Q4, 2020 UK Economy and Property Market Chart Book**

- To soften the blow, the bank has launched further stimulus,
- While fiscal support has also risen,
- Still, unemployment is likely to rise further,
- **Recovery in the housing market will run out of steam further ahead** - Activity across the UK housing market remain firm which appears to be at-odds with the subdued economic picture. Housing transactions have continued to rebound while mortgage approvals in September 2020 reached their highest level in thirteen years. However, feedback to the *RICS UK Residential Market Survey* (also covered in this issue of *Knowledge Foundations*) suggests that this trend is unlikely to be sustained further ahead. Average twelve-month sales

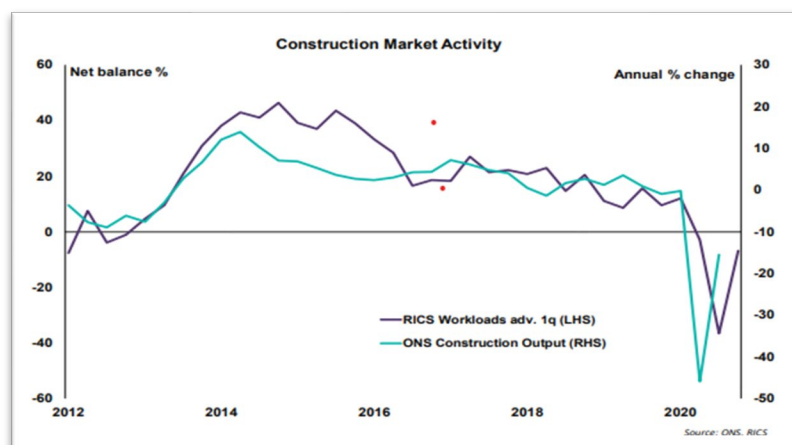
[Back to top](#)

expectations point to momentum slowing with the difficult economic backdrop expected to weigh on activity next year as the Stamp Duty holiday comes to end. Meanwhile, the Q3 results for the RICS UK Commercial Property Market Survey (also covered in this issue of *Knowledge Foundations*) suggest that the office and retail segments of the market are continuing to struggle against the challenges posed by the ongoing pandemic while activity across the industrial sector seems to be relatively more resilient. Over the course of the next twelve months (see publication date), rents are envisaged to decline sharply in both the retail and office sectors. In contrast, contributors envisage industrial rental values rising by around 1.5% in the coming year.

- **Government policies are likely to support activity in the construction sector** - Turning to the construction sector, the government's commitment to increase infrastructure spending is likely to help support activity across the industry in the coming years. A net balance of +35% of respondents to the RICS Q3 2020 survey (covered in previous issues of *Knowledge Foundations* available within the UCEM e-Library) anticipate workloads rising in the infrastructure sector over the course of the next twelve months. Output is also seen rising across the private housing sector supported by new permitted residential development rights and reforms to England's planning system.

Construction Sector – In the RICS UK Construction Market Survey, the headline workloads net balance registered a reading of -7% in Q3 2020 up from -37% in Q2. Although this suggests that activity is beginning to recover somewhat across the sector, it is probably that construction output will remain down on a year-on-year basis, at least in the near term (see Chart 20).

Chart 20: Output is unlikely to reach pre-Covid levels in near term:



Source: RICS Economics Research: *RICS UK Economy and Property Market Chart Book* (Q4 2020), London: RICS, p11 - Chart 20.

[Read the full piece of research 'RICS UK Property and Market Chart Book, Q4 2020](#)

[Back to top](#)**UK Residential Market Survey: February 2021**

- Lockdown still weighing on sales market activity somewhat, but forward-looking indicators improve

- New vendors deterred given current restrictions, with demand metrics also slightly negative,
- Upward pressure on house prices shows no sign of easing,
- Near term sales expectations move into positive territory.

The February 2021 RICS UK Residential Survey results point to another slightly softer month for sales market activity, albeit this is following an especially strong second half of 2020. In particular, current lockdown restrictions appear to be deterring new vendors putting their homes up for sale. However, forward looking metrics have shown some improvement, with sales expected to rise modestly over the coming three months. What's more, it is important to note that over three-quarters of the survey sample was gathered prior to the Chancellor confirming that the Stamp Duty holiday would be extended until the end of June (and then tapered through to October) in the recent Budget.

At the national level, the net balance for new buyer enquiries came in at -9% in February. Although this is the second consecutive negative monthly figure, it is noticeably less downbeat than the reading of -29% posted in January. Meanwhile, new instructions also fell for a second month in succession, evidenced by a net balance of -29% of contributors reporting a decline (which compares to a reading of -40% recorded in the January figures, and reported on in *Knowledge Foundations* last month.)

With regards to house prices, the survey's headline gauge of price growth registered a net balance of +52% in February (little changed from +49% returned last month). As such, this measure is indicative of house price inflation maintaining strong momentum, even if the latest reading is a touch softer than the recent high of +66% seen back in October last year (2020). At the regional level, respondents across all parts of the UK noted some degree of price growth in the latest results, with Wales, the North of England and Northern Ireland all exhibiting particularly strong readings.

[Read the latest RICS UK Residential Market Survey: February 2021 in full.](#)

RICS - SPACIOUS 千居 Hong Kong Residential Monitor / Market Survey: February 2021

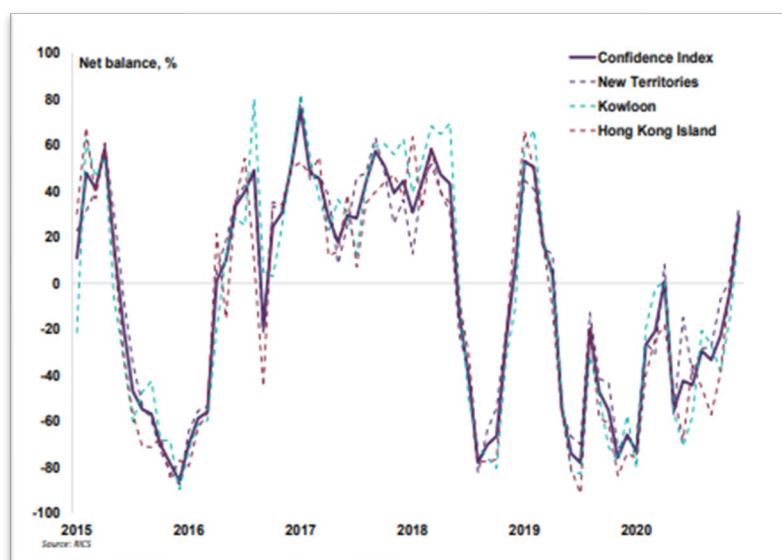
- Housing market confidence back in positive territory

- Prices seen rising for first time in two years amid increasing demand,
- Both prices and sales volume expected to increase throughout 2021,
- Rental market continues to lag, though outlook slightly more upbeat than previous months.

[Back to top](#)

Responses to the February 2021 RICS-Spacious Hong Kong Residential Monitor indicate that the housing market may have turned the page on its recent downturn. The Confidence Index* (CI), shown in Chart 1, rose to +29 in February from -4 in January. This is the highest the CI has been since April 2019, breaking a streak of seven consecutive months in negative territory, and puts the residential market on a positive trajectory.

Chart 1: Confidence Index*:



Source: RICS Economics Research: *RICS Hong Kong Residential Monitor – February 2021*, London: RICS, p1 - Chart 1.

* The Confidence Index is a composite measure capturing overall market momentum, encompassing variables on short-term.

The improvement in prices appear to have filtered through to expectations. A net balance of 24% of respondents expect aggregate prices to rise over the next three months (see publication date).

The increased optimism for the sales market appears to be linked to the improvement in COVID-19 in the city as well as the limited capacity for new supply to hit the market. However, some respondents also highlighted the weak economic outlook and scarcity of government support in the recent budget as factors that could weigh on any market recovery.

[Read the latest RICS HK Residential Monitor: February 2021 in full.](#)

Global Commercial Property Monitors, Q4 2020

- Sentiment metrics edge upwards in Q4 but still reflect virus uncertainty and macro scarring.

- Real estate sentiment remains negative albeit less so than previously,
- Logistics/Industrial continue to outperform alongside some alternatives such as data centres,

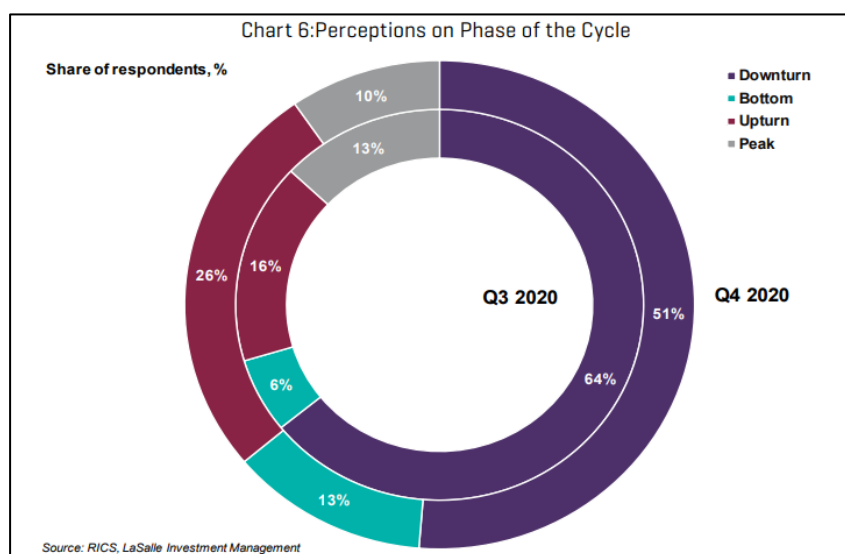
[Back to top](#)

- Cross-border investment enquiries indicator reflects ongoing concerns about the outlook.

Opinions divided on the current stage of the cycle

35% of respondents still view the market to be in a downturn phase of the cycle collectively across the Middle East and Africa, significantly below the 60% who were of this opinion previously. At the same time, there was a rise from 16% to 25% in the proportion of survey participants sensing the market has reached a floor.

Chart 6: Perceptions on Phase of the Cycle:



Source: RICS Economics Research: *RICS Global Property Monitor, Q4 2020*, London: RICS, p3 - Chart 6

Even so, the largest share of contributors in South Africa and Nigeria still perceives the market to be turning down. Conversely, a strong majority of respondents in Saudi Arabia feel a recovery is already underway in the market.

[Read the latest RICS Global Commercial Property Monitor, Q4 2020 in full.](#)

Latest Statistics from the Office for National Statistics (ONS)

UK economy latest – A roundup of the latest data and analysis on the UK economy, business and jobs following Brexit and during the coronavirus (COVID-19) pandemic.

Construction Industry highlights include – Construction output in Great Britain: November 2020

What’s covered in the latest bulletin?

- Construction output grew by 1.9% in the month on-month all work series in November 2020, because of a 3.5% increase in new work that more than offset the 0.6% fall in repair and maintenance; this was the seventh consecutive month of growth since the record decline (40.7%) in April 2020.

[Back to top](#)

- The level of construction output in November 2020 was 0.6% above the February 2020; with repair and maintenance work 7.4% above and new work 3.1% below its pre-pandemic level.

- The monthly increase in new work (3.5%) in November 2020 was because of growth in all new work sectors apart from public new housing and public other new work, which fell by 2.4% and 2.8% respectively.

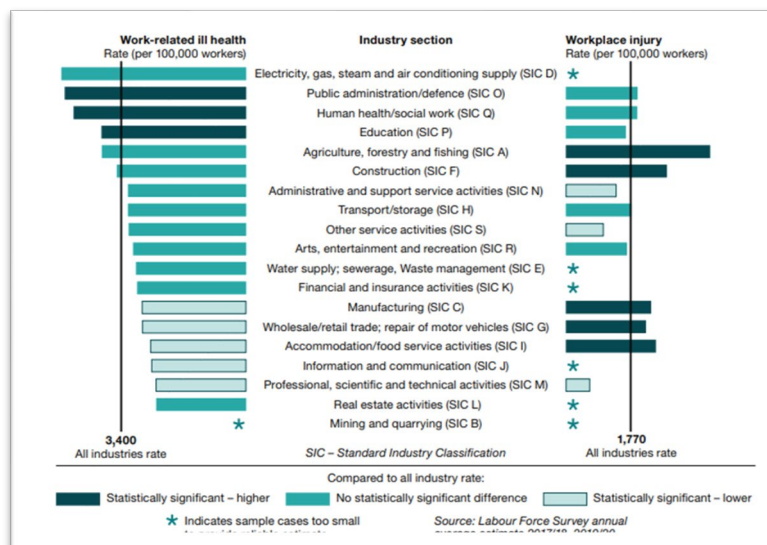
[Read the full statistical bulletin, 'Construction output in Great Britain: November 2020'](#)

Latest Statistics from HSE – Health and Safety Executive

Latest Key figures for Great Britain (2019/20)

- **1.6 million** working people suffering from a work-related illness.
- **2,446** mesothelioma deaths due to past asbestos exposures (2018)
- **111** workers killed at work.
- **693,000** working people sustain an injury at work according to the Labour Force Survey
- **65,427** injuries to employees reported under RIDDOR.
- **38.8 million** working days lost due to work-related illness and workplace injury.
- **£16.2 billion** estimated cost of injuries and ill health from current working conditions (2018/19)

For 'Rate of self-reported work-related health and non-fatal injury by industry'



More detailed statistics on selected industry groups (that include 'construction' can be found from [the suite of health and safety statistics tables](#) and '[Summary Statistics 2020](#)'.

[Access further information on health and safety statistics from HSE – Health and Safety Executive.](#)

[Back to top](#)



e-Journal Review

Built Environment Industry Journal titles reviewed by UCEM e-Library

MODUS

MODUS - the RICS magazine that brings you the latest news and views, expert advice and in-depth features spanning the breadth of the surveying profession around the world.

In the latest digital **MODUS** (**April 2021**), RICS takes a look at 'Reclaiming the streets' – Why designing safer, cleaner and better neighbourhoods is in all out interests.

Subject Terms/Keywords: Diversity and inclusion; Cities and placemaking

Latest articles within *Modus*:

- **Crime prevention: are our streets safe?** – For many people, especially women, a fear of crime puts restrictions on their lives and movements. What can we do to make our neighbourhoods feel safer?

Subject Terms/Keywords: Planning and development.

- **Boom or doom: can hotels recover from COVID-19?** – The pandemic has been disastrous for the hospitality and leisure industry – but, experts say, gloom among investors in the sector should be tempered by cautious optimism.

Subject Terms/Keywords: Commercial valuation.

- **The UK high street's winners – and the losers** – It has been a troubling few years for the British retail sector – some chains have survived, others have thrived but some of the oldest and most familiar have fallen by the wayside.

Subject Terms/Keywords: Commercial valuation.

- **Filling in the gaps: making the most of shopping malls** – Shopping centres were once the golden geese of the property sector but, hit by falling footfall, online retail and COVID-19, the agents who let and acquire them are thinking hard about how they will survive.

Subject Terms/Keywords: Commercial valuation.

[Back to top](#)

- **The Great Outdoors – our cities’ race for space** – Developers have begun to realise the benefit of including open spaces in their schemes: attractive and innovative public areas could revitalise urban centres – and may increase profit.

Subject Terms/Keywords: Cities and placemaking.

- **Changing landscapes: Britain’s farming future** – Agricultural policy was at the heart of the Brexit debate but, now that the UK has withdrawn from the EU, how will the sector change? Two rural surveyors give their views on the implications for farmers and farming.

Subject Terms/Keywords: Environmental management; Rural economy; Sustainability.

- **Less than zero: how to achieve energy-positive buildings** – Reduce, reuse, recycle are the tenets of green technology but, in construction, abiding by these principles is rarely easy. Dutch developer EDGE proves that it can be done and wants to show us all how.

Subject Terms/Keywords: Energy Retrofit; Projects & people; Sustainability.

- **Construction counts the cost of COVID-19** - What can the latest RICS research tell us about the impact of the pandemic on local construction markets – particularly when it comes to predicting costs. **Note:** See also ‘Latest Property and Construction Statistics’ section within this issue of *Knowledge Foundations*.

Subject Terms/Keywords: Quantity surveying and construction; Cost management.

- **Workations – why hotels could make the best offices** – Staying away from the office has been obligatory more millions of people in the past year (2020) – but can empty stores and hotels provide a better alternative to working from the spare room?

Subject Terms/Keywords: Running your business; Commercial property.

- **Another day at the (home) office** - As lockdowns continue for the foreseeable future (see publication date), stay motivated and mentally resilient while WFH with tips from the professionals who’ve been doing it for years.

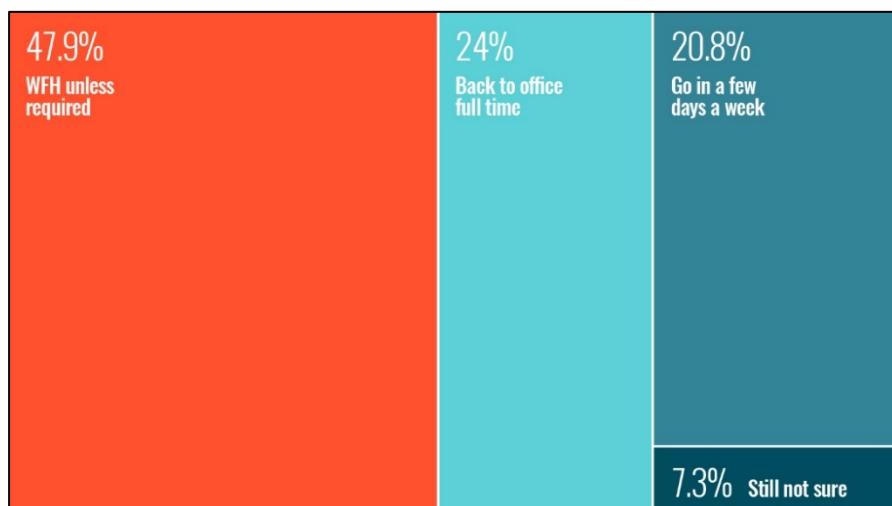
Subject Terms/Keywords: Wellbeing; Running your business; Learning and development.

- **Working from home: how was it for you?** Companies are calling for staff to get back to the office but the data (as shown overleaf) suggests that employees aren’t all ready to return to the commute just yet.

Subject Terms/Keywords: Running your business.

[Back to top](#)

Working from home, how was it for you?



Source: RICS (2020) 'The results of the RICS Modus Twitter poll on home working', *Modus*, 1 October, London: RICS.

Please note: In addition to *MODUS*, RICS publishes other journals that are free to view online incl.

1. **Construction Journal** - The journal helps **quantity surveyors** and project managers with the technical and professional aspects of their day jobs and keep up to date with developments and practical matters in the profession. It covers topics including contracts, cost management, procurement, construction law and regulations, communication, and project management skills.
2. **Built Environment Journal** (incl. Building Surveying, Building Conservation, and Building Control) - Coverage keeps practitioners in the disciplines of building surveying, building control, and building conservation up to date on the latest developments, products, standards, and guidance.
3. **Land Journal** - The journal emphasises the crossovers in these practice areas and their global nature, with articles contributed by experts from all over the world.
4. **Property Journal** - The journal contains high-quality technical material in clearly defined sections, as well as some material that crosses professional groups to reach a wider audience.

Further information can be accessed via the RICS Website, Home > News & Insights > [RICS Publications](#) [online].

The Heritage Alliance's **Heritage Update**, the latest edition, **March 2021 – Issue 438** focusing on the Budget 2021. Responding to the Budget 2021, The Heritage Alliance summarises key outcomes (covered earlier in this issue of *Knowledge Foundations*). Also covered within this issue – Funding Boost for Culture & Heritage; Historic Environment Forum publishes **Heritage Recovery Plan**; & Visit the heritage Alliance "**Virtual Programme**" for Heritage Day.

Institute of Workplace and Facilities Management (IWFM) **Facilitate**, the latest **March/April '21** edition focusing on

[Back to top](#)

'AI: An invisible revolution in Workplace Learning'. A technology revolution driven by AI will transform the way we plan learning and manage knowledge at work. The only thing holding it back will be the humans working alongside it, argues David Sharp, CEO of International Workplace, within the cover article.

Contractors World International,

Construction Manager is the magazine of the Chartered Institute of Building (CIOB) who also publish the **Global Construction Review** (GCR).

Subscriptions available via the VLE e-Library include:

Construction Information Service (CIS) Insight 2021. The Latest Edition focuses on – **Post-Brexit conformity marking and designated standards; how the new rules affect you,** and covers -

- **Understanding new terminology,**
- **How CE, UKCA and UKNI marking works,** and
- **UK Designated Standards and hENs.**

Taylor and Francis Online and include the following e-Journals:

- *Construction Management and Economics,*
- *Building Research and Information,* and
- *Journal of Property Research*

Henry Stewart Publications and include the following e-Journals:

- *Building Survey, Appraisal and Valuation,*
- *Journal of Urban Regeneration & Renewal,* and
- **Corporate Real Estate.**

Corporate Real Estate Journal is the essential peer-reviewed, professional journal for corporate real estate executives.

Each quarterly 100-page issue publishes high quality articles and real case studies on new thinking, strategies, and techniques in corporate real estate. It cuts through the deluge of information facing corporate real estate professionals to deliver content, which is authoritative, practical, and relevant by providing a blend of genuine thought-leadership – which expands what can be achieved with corporate real estate – with detailed, actionable advice and 'lessons learned' from industry peers.

In-depth articles and case studies scheduled for the new volume, **Vol 10 (3) (2020-21)** of **Corporate Real Estate Journal** incl.

1. Managing global property portfolios, transactions, and teams: A primer for corporate real estate executives – Part 2: Communications

2. Managing global property portfolios, transactions, and teams: A primer for corporate real estate executives - Part 3: Assembling and managing in-market teams

[Back to top](#)

3. Fresh perspectives on the future of the office: A way forward
4. Rapidly changing landscape: Commercial real estate and the new perspective
5. An environmental, social and governance programme for corporate real estate and facilities departments
6. Portfolio management and occupancy planning in a post-pandemic world
7. COVID-19 and the economic implications for office occupiers
8. Book review – Where is My Office? Reimagining the Workplace for the 21st Century

Vol 10 (2) (2020-21) of *Corporate Real Estate Journal* incl.

1. The importance of community in public-private partnerships and development
2. Managing global property portfolios, transactions, and teams: A primer for corporate real estate executives – Part 1
3. Tokenisation of corporate real estate on the blockchain: New strategies for corporate ownership and financial management
4. Telia and Veolia: A case study of shifting from supplier to strategic partner
5. Back to the future: Changing business priorities have accelerated trends in the structure and approach to corporate real estate outsourcing
6. The United States civil engineer transformation initiative: A case study of successfully leading CRE organisational change management

Vol 10 (1) (2020-21) Special issue: COVID-19, CRE and workplace response

1. COVID-19: Reimagine: how and where the world will work differently
2. Global Warming, COVID-19, and a new world for conducting business
3. Gen Z and the workplace: Can we all get along?
4. Recognising the socio-technical opportunity of workplace: An analysis of early responses to COVID-19
5. The technology-enabled future of real estate? A present-day necessity
6. Workplace strategy and scenario planning: Moving beyond the tangible to understand the future of work and place in a post COVID-19 world
7. Exploring the meaning of 'workplace' in a post-pandemic world: The future of corporate real estate in delivering 'place'

[Back to top](#)

8. New demands for resilience in real estate: Resilience and adaptability after the COVID-19 pandemic

9. Editorial thought pieces

CRE leadership: Crisis demands transition to a digital ecosystem-based home office analysis during COVID-19

10. COVID-19: Implications for real estate.

HSTalks

© Henry Stewart Talks Ltd 2021

HSTalks is a member of the Henry Stewart Group which has been a leader in providing graduate and continuing professional education in science, business, and management for over 40 years through peer reviewed vocational journals (such as the *Corporate Real Estate Journal*), conferences and online education for medical schools, business schools, universities, government, and commercial enterprises in over 60 countries around the world.

Henry Stewart Talks Ltd (HSTalks) provides specially prepared, animated, online, audio-visual lectures, seminar-style talks and case studies that accompany the 'Business & Management Collection' of e-Journals that the UCEM e-Library subscribes to.

Educational Journal titles and Open Educational Resources (OERs) reviewed by UCEM e-Library

[Open Praxis](#) – peer-reviewed open access scholarly journal focusing on research and innovation in open, distance and flexible education.



This work is licensed under a [Creative Commons Attribution 3.0 Unported License \(CC BY 3.0\)](#).

The latest edition, **Vol 12(4)** and third *Open Praxis* in 2020 includes six research papers and two innovative practice papers:

Research articles include:

1. 'Exploring the impacts of distance higher education on adult learners' lives are reclaiming lifelong learning as a human development process'
2. 'Tutoring support as a predictor of student retention in distance learning: The case of a University in Ghana'
3. 'Open and Distance Learner Engagement with Online Mediation Tools: An Activity Theory Analysis'
4. 'The Influence of Social Presence on Students' Satisfaction toward Online Course'

[Back to top](#)

5. 'Evaluation and Improvement of Students' satisfaction in Online Learning during COVID-19'
6. 'An Evaluation of Online Proctoring Tools'
7. 'What About Reuse? A Study on the Use of Open Educational Resources in Dutch Higher Education'
8. 'Impact of OER in Teacher Education'
9. 'Student Perceptions of Textbooks: Prior Behaviours and belief Can Influence Zero Textbook Cost (ZTC) Adoption Impact'.

Book Review:

1. 'Book Review of Teaching and Learning with Technology: Pushing boundaries and breaking down walls'

European Journal of Open, Distance and E-Learning

(EURODL), an electronic, multi-media, open access journal. It publishes the accounts of research and presents scholarly work and solid information about open, distance, online and e-learning in technology-enhanced education and training in its most inclusive definition.

Published in the **Latest Issue of EURODL**, Vol. 23 (2021): Issue 2 (Jan 2021), article titles include:

- 'Building Digital Capacity for Higher Education Teachers: Recognising Professional Development Through a National Peer Triad Digital Badge Ecosystem',
- 'Cultivating Self-Regulated Learning in Flipped EFL Courses: A Model for Course Design',
- **'Transcript and Accessibility: Student Views from Using Webinars in Built Environment Education', by UCEM's Tharindu R. Liyanagunawardena**
- 'Vector AR3-APP – A Good-Practice Example of Learning with Augmented Reality',
- 'Educators' Digital Competence in Swedish Rural Schools',
- 'Proposition for the Introduction of the Concept Telemathesis in Videoconferencing in Distance Education',
- 'Developing E-Authentication for E-Assessment'
- 'Diversity of Students Testing the System in Higher Education'.

Online Learning Journal (OLJ), the official journal of the **Online Learning Consortium (OLC)**

The **Online Learning Consortium's** premier journal dedicated to the development and dissemination of new knowledge at the intersection of pedagogy, emerging technology, policy, and practice in online environments.

The OLC **Online Learning Journal**, latest edition, **Vol 25(1)**. You probably know that the Online Learning Consortium publishes a peer-reviewed scholarly journal called Online Learning (OLJ). But did you know that this journal is entering its 25th year of publication? First published in 1997 as the Journal of Asynchronous Learning Networks (JALN), the journal changed

[Back to top](#)

names (and merged with MERLOT's Journal of Online Learning and Teaching) in 2014. To celebrate twenty-five years of excellence in systematic investigations of online education we will present a special issue in March 2021 edited by Dr. Shanna Smith Jaggars.

Table of Contents – Introduction to the 25th Anniversary Issue of Online Learning

Special Issue on COVID-19 – Introduction to the Special Issue on the COVID-19 Emergency Transition to Remote Learning

Section I: Investigating Teaching, Learning and Student Support in the U.S.

- 'Teaching and Learning in the Time of COVID-19: The Student Perspective',
- 'Remote Student Support During COVID-19: Perspectives of Chief Online Officers in Higher Education',
- 'COVID-19 and Community College Instructional Responses'
- 'A Pandemic of Busywork: Increased Online Coursework Following the Transition to Remote Instruction is Associated with Reduced Academic Achievement',
- 'Profiles of Instructor Responses to Emergency Distance Learning',
- 'A Light in Students' Lives: K-12 Teachers' Experiences (Re)Building Caring Relationships During Remote Learning',
- 'Instructor Social Presence and Connectedness in a Quick Shift from Face-to-Face to Online Instruction',
- 'Using an Ethos of Care to Bridge the Digital Divide: Exploring Faculty Narratives During a Global Pandemic',
- 'Preparing Doctoral Students to Teach in an Increasingly Virtual World: A Response to COVID-19 and Beyond'.

Section II: Brief Case Studies on the Pivot to Emergency Remote Teaching

- 'Without Crossing a Border: Exploring the Impact of Shifting Study Abroad Online on Students' Learning and Intercultural Competence Development during the COVID-19 Pandemic',
- 'Motivating Students to Learn AI Through Social Networking Sites: A Case Study in Hong Kong',
- 'Moving Hands on Mechanical Engineers Experiences Online: Course Redesigns and Student Perspectives',
- 'Maintaining Academic Performance and Student Satisfaction during the Remote Transition of a Nursing Obstetrics Course to Online Instruction',
- 'Using Telehealth to Enhance Paediatric Psychiatric Clinical Simulation: Rising to Meet the COVID-19 Challenge',
- 'Adapting a Classroom Simulation Experience to an Online Escape Room in Nutrition Education',
- 'Moving Assessment Online: Experiences within a School of Pharmacy'.

Section III: International Perspectives

- 'The Forgotten Ones: How Rural Teachers in Mexico are Facing the COVID-19 Pandemic',
- 'The Hidden Shadow of Coronavirus on Education in Developing Countries',
- 'Jordanian University Students' Views on Emergency Online Learning During COVID-19',
- 'Teachers' Engagement in and Coping with Emergency Remote Instruction During COVID-19 Induced School Closures: A Multinational Contextual Perspective'.

[ISSN: 2472 – 5730]

[Higher Education Pedagogies](#), an Open Access Journal.

[Henry Stewart Publications](#), Management e-Journal collection incl. *Journal of Education Advancement & Marketing*.

[The Open Education Research Hub](#) (OER Hub), and

[The Directory of Open Access Journals](#) (DOAJ)

[Back to top](#)



e-Book Review

Managing Diversity and Inclusion in the Real Estate Sector

Clack A and Gabler J (2019) *Managing diversity and inclusion in the real estate sector* [e-book], Oxon: Routledge. e-ISBN-13: 9780429428975

Research shows that high-performing organisations focus on diversity and inclusion (D&I). In any workplace, it is important to both understand and recognise the benefits that having a D&I workforce provides. It is integral to developing people within an organisation, serving clients as best we can, and playing an important leadership role in communities.

Managing diversity and inclusion in the real estate sector is the first to place D&I at the centre of successful real estate and construction organisations. It provides guidance to, and most importantly, actions for professionals in the sector who want to make D&I an inherent part of the culture of their organisation. This book has been written to bring the sector up to speed with what D&I is all about and how a D&I strategy can be implemented to secure future success. It presents a practical and easy-to-read guide that can help organisations and their leaders engage with and apply this agenda to win the war for talent in real estate and construction.

This book is essential reading for all property leaders and professionals working in the real estate and construction sectors. Readers will gain especially from personal reflections on all aspects of diversity by a broad range of people working in the property industry.

[Back to top](#)

Adding some Tec-Variety: 100+ Activities for Motivating and Retaining Learners Online

Bonk C J, and Khoo E R (2014) *Adding some Tec-Variety: 100+ Activities for Motivating and Retaining Learners Online* [e-book]. CreateSpace Independent Publishing Platform, e-ISBN-13: 9781496162724

As this book states, “Motivation is central to all things human” and Online teaching and learning are no different. The authors of this free online book propose the TEC-VARIETY framework as a solution to the lack of meaningful engagement.

It can shift learners from nearly comatose states to actively engaged ones. *Adding Some TEC-VARIETY* helps instructors focus on how to motivate online learners and renew their own passion for teaching. Using 10 theoretically driven and proven motivational principles, TEC-VARIETY offers over 100 practical yet innovative ideas based on decades of author experience teaching in a variety of educational settings.

[Access the free online book *Adding Some TEC-VARIETY*](#)

Please note: The authors have made an online version of this work available under a **[Creative Commons Attribution-Non-Commercial-Share-Alike 3.0 Licence](#)**.

Studying at a Distance

Talbot C (2010) *Studying at a Distance* [e-book]. Maidenhead: Open University Press, e-ISBN-13: 9780335238057

This essential guide provides practical help and support for those who have not previously studied at a distance and is ideal for students returning to study after a break. It covers fundamental issues such as motivation, goal setting, time management and coping strategies. Additional coverage in this third edition includes: specific information on the use of new technologies in distance learning; detailed coverage of referencing, citation, and plagiarism; description of using mind maps and other techniques for planning and writing essays or reports; support for disabled students, particularly those with dyslexia; and an expanded further resources section.

Directory of Open Access Books (DOAB)

The primary aim of DOAB is to increase discoverability of Open Access books. Academic publishers are invited to provide metadata of their Open Access book to DOAB.

[Access the Directory of Open Access Books \(DOAB\)](#)

[Back to top](#)

UCEM e-Library Portrait



© UCEM 2021

At UCEM, we recognise that in an information-rich age and when everyone is pressed for time, it can be a challenge to find good-quality information when you need it.

Whether you are obtaining a qualification, undertaking CPD or researching a particular field, having access to a well-equipped library is essential.

The UCEM e-Library (accessed through the Virtual Learning Environment - VLE) is a comprehensive and valuable online resource, enabling students to access a wealth of subject-specific and credible information to support them throughout their studies and career development.

The aim of the e-Library

The aim of the e-Library is to:

- disseminate information, share good practice, and promote current awareness to assist in underpinning written work,
- add value and depth to our students' study experience, and
- support the continuing professional development of all those working and aspiring to work in the built environment.



© UCEM 2021

[Back to top](#)

What resources are available in the UCEM e-Library?

The e-Library is made up of 11 sections and provides students with around the clock access to online searchable databases from key industry and educational sources, thousands of journals, books, and resources, UCEM's entire collection of study materials and published work and UCEM's dissertation library.

The sections that make up the UCEM e-Library:



© UCEM 2021

Resources available within the UCEM e-Library include: Up-to-date information and online searchable databases from –

Key educational sources that include- Taylor and Francis Online, Ingenta Connect, Henry Stewart Publications and HS Talks, JustisOne, Westlaw EDGE UK, EBSCO Business Source Premier, Emerald Insight - access to around 2600 eBook titles and their entire 'Property Management and the Built Environment' collection of journals, and

Industry-specific sources that include- IHS's Construction Information Service, *Estates Gazette* digital journal and *Estates Gazette Interactive (EGi)*, RICS's BCIS – Building Cost Information Service and ISURV online information service, NEC - New Engineering Contract Academia, BSRIA – Building Services Research and Information Association, and more.

Where to find help - Overwhelmed by the sheer amount of information out there?

Not only do libraries provide us with books to read, but they are valuable tools and resources. The UCEM e-Library is continually striving for improvement and changing to meet the demands of today's technology and ever-expanding volumes of knowledge creation.

The e-Library is here to help make finding up-to-date, credible, and relevant information easier.

[Back to top](#)

Supported by: The work of the UCEM e-Library is endorsed by Emerald Publishing Ltd:



© Emerald Publishing 2021

Emerald Insight – the online platform for Emerald Publishing

Emerald champions new ideas in advancing the research and practice of business and management, and manages a portfolio of nearly 300 journals, including a 'Property Management and the Built Environment' collection that UCEM subscribes to.



© Emerald Publishing 2021

Emerald works in close collaboration with numerous academic (including UCEM) and corporate organisations worldwide. Emerald

Emerald Publishing endorses the e-Library's tailor-made research reports – a service provided to UCEM tutors to help supplement teaching and learning materials on subject-specific areas.

Here are some Open Access Journal articles available via Emerald, all around the theme of '**The COVID-19 pandemic and impact on the education sector**'.

Note: The following article examples are freely available via **Emerald Publishing Open Access**:

1. Gautam D K and Gautam P K (2021) 'Transition to online higher education during COVID-19 pandemic', *Journal of Research in Innovative Teaching & Learning*, Vol 14(1), pp93-111, Emerald Publishing Ltd, and
2. Rizvi Y S and Nabi A (2021) 'Transformation of learning from real to virtual: an exploratory-descriptive analysis of issues and challenges', *Journal of Research in Innovative Teaching & Learning*, Vol 14(1), pp5-17, Emerald Publishing Ltd.

Remember:

"A Librarian is a powerful search engine with a heart, that listens and understands the library and information requirements of others and provides a response in a format that suits their needs" says Lucy Roper, UCEM Information Governance Manager and who can be contacted on the library@ucem.ac.uk email address.

[Back to top](#)

Student Career Services

UCEM Career Services

UCEM Career Services is part of the Student Outreach Team and Student Services. They offer careers Information, Advice and Guidance (IAG) to potential, current and past students. The service is confidential, non-judgmental, and impartial.

[Access UCEM Career Services](#)

Building Better Property Professionals



© 2021 — Property Elite LLP

Property Elite's sole aim is to build better property professionals – supporting your career every step of the way, whether you are completing a RICS accredited degree course, your RICS Assessment of Professional Competence (APC) or simply seeking engaging Continuing Professional Development (CPD).

Property Elite provides training and CPD services for property professionals, including students, APC candidates and corporate clients.

Their Hot Topic Highlight blog posts will arm you with the information on the hottest topics – ready to tackle an important client meeting or begin revising for your RICS APC final assessment.

This month (**April 2021**) the **Hot Top Highlight – RICS Guidance Note – Valuing Residential Buildings with Combustible Cladding**.

In this latest blog article, Property Elite summarises what you need to know about the new RICS Guidance Note, ***Valuation of properties in multi-storey, multi-occupancy residential buildings with cladding***, 1st edn., March 2021.

This is essential reading for any candidates who are involved in valuing residential property, particularly in relation to the Valuation and Loan Security Valuation competencies.

The RICS Guidance note is also supported by ***Cladding for surveyors*** - a supplementary Information Paper to *Valuation of properties in multi-storey, multi-occupancy residential*, RICS Guidance note, 1st edn., March 2021.

[Back to top](#)

What is the aim of the new Guidance Note?

The new Guidance Note aims to assist valuers when valuing multi-storey, multi-occupancy residential buildings (i.e., blocks of flats) with cladding, particularly for secured lending (mortgage) purposes.

It specifically provides criteria 'that can be used by a competent valuer during a standard valuation inspection to identify buildings where remediation work to cladding for fire safety purposes that may materially affect the value of the property is likely to be required'.

The guidance will help valuers to understand the EWS1 form process and when one will be required due to visible cladding being present. It will also help other stakeholders to understand the process of buying and selling affected buildings.

[Further details and access to the Property Elite blog entitled, 'RICS Guidance Note – Valuing Residential Buildings with Combustible Cladding'](#).

What is the RICS Covid-19 Recovery Business Plan 2020-2021? In response to the Covid-19 pandemic, RICS have published their Recovery Business Plan 2020-2021: A global professional body fit for the 21st century shaping the built and natural environments.

[This RICS Covid-19 Recovery Business Plan 2020-2021 updates the former RICS Business Plan 2018-2021 and can be downloaded via the RICS website.](#)

Lucy's Top Tip – If you are planning to sit your RICS APC/AssocRICS, make sure you are aware of Property Elite's APC Support services, including submission reviews, question packs, revision quizzes and e-mock interviews.

Note: The author of most of these blogs, Jen Lemen-Hogarth is an Associate Tutor – UCEM and Partner – Property Elite.

You can also download this blog [in audio format](#) and listen whilst on the move. When you're done, you can request further information and a free CPD certificate.

[Access Property Elite's 'Building Better Property Professionals', Latest Blogs](#)

Other related web-links

[GoConstruct.org](#) website showcases the many career opportunities available in construction and the built environment. The website helps to meet the future skills needs of the industry and to recruit a workforce that is diverse and ready for the challenge of the future.

[TARGETjobs](#) – All TARGETjobs graduate career guides and directories are available for you to view online and download for

[Back to top](#)

future reference and include [Property 2020](#), [Engineering 2021](#), and [Careers Survival Pack](#).

[House Building Careers](#) – Part of Home Builders Federation (HBF), here you will be able to learn about the home building industry and how it benefits you, your community, and the country as a whole.

[Access to: RICS Careers](#) – What is surveying? See how surveyors shape our communities and tackle global issues like climate change – and discover how you can improve the world around you.

Building People



© UCEM 2021

Enabling connections for a competent, diverse, and valued built environment workforce

The aim of ‘Building People’ was to create a technology platform and collaborative network, that enables connections and seeks to reduce the skills shortages across the Built Environment.

In 2018 UCEM’s widening participation ambitions were boosted after acquiring the innovative Built Environment digital network. ‘Building People’, a social enterprise that aims to connect people traditionally not involved in the Built Environment sector with employers seeking to plug the skills gap via an online platform, is now a subsidiary of UCEM.

People Wiki:

What are you looking for?

<p>Search Organisations</p> <p>See what help is available to find work, learning and/or support.</p> <p>LEARN MORE</p>	<p>Find Information</p> <p>Our partnership with Designing Building Wiki brings together industry-wide content in one place.</p> <p>LEARN MORE</p>	<p>Ask A Person</p> <p>Contact people to gain industry knowledge, experience and guidance.</p> <p>LEARN MORE</p>
<p>Learning & Events</p> <p>Find courses, training and events relevant to you.</p> <p>LEARN MORE</p>	<p>Work Opportunities</p> <p>Employers opportunities in one place making it easy to find what you’re looking for.</p> <p>LEARN MORE</p>	<p>Resources</p> <p>Easily access sector-specific material, brought together all in one place.</p> <p>LEARN MORE</p>

Building People and Designing Buildings Wiki have launched People Wiki, a free, open access knowledge sharing platform for diversity and inclusion, skills and careers, and social value.

The UK needs to build, but there is a shortage of competent and experienced workers, and the workforce we have lacks diversity. Building People joins the dots to help people find employers, opportunities, and resources, and to help employers engage with a more diverse range of talent.

The launch of People Wiki is a crucial part of Building People's ambition to create a single platform that brings together a multitude of previously fragmented information, knowledge, resources, opportunities, and needs focused on diversity and inclusion, skills and careers, and social value. This platform is now live and provides users with options to find organisations that can support them with built environment careers, as well as access to information and resources. In September, the platform will expand to include directories that bring together events, courses, and work vacancies (with an initial prototype focus on the surveying profession).

People Wiki has been created as part of Designing Buildings Wiki and is fully linked to its 10,000 existing articles and easily accessible by its 7.5 million annual users. This collaboration with an established and respected industry knowledge base will help Building People achieve its vision of a built environment that improves social and economic value by being better connected, more diverse and more inclusive.

[Back to top](#)



UCEM Sustainability Hub

UCEM has a Sustainability Hub within the VLE e-Library where you will find interesting resources, news, articles, projects and publications which support and information 'future skills' for sustainability within the construction, surveying, and property industries.

Sustainability supports UCEM vision and core purpose to provide truly accessible, relevant, and cost-effective education, enabling students to enhance careers, increase professionalism and contribute to a better built environment.

Building Research Establishment (BRE) Sustainability

- Practical guidance and support for delivering genuine sustainability benefits.

Greater sustainability and its many benefits can be achieved for all buildings, homes, organisations, and communities. The BRE provides leading edge information and advice on all aspects of

[Back to top](#)

sustainable that include – Sustainable construction of buildings, Communities, Infrastructure, Sustainable organisations, Materials, products and services, Waste management, Energy management services, and Training and publications.

[Access BRE Sustainability](#)

The Routledge Sustainability Hub

The Routledge Sustainability Hub is an innovative Knowledge Centre for the global sustainability community, this Hub offers a wide range of resources for everyone – whether you are a teacher, a student, a professional or a citizen of the earth curious to discover more about the many facets of sustainability.

[Access the Routledge Sustainability Hub](#)

The Green Agenda

Within the Savills Market Trends – ‘Real estate investment in 2021: global outlook’ (mentioned earlier within this issue of *Knowledge Foundations*) they covered ‘The Green Agenda’ –

Despite the challenges of 2020, the rising importance of environmental, social and governance (ESG) credentials for investors has continued to grow.

Across the globe, governments are making ‘climate emergency’ declaration and commitments to meeting net zero carbon in certain timeframes. To honour these commitments, new investment into green technology, energy and much more has been announced but also an increasing amount of regulation.

Real estate is under the spotlight as the built environment accounts for 40% of carbon emissions across the world. This will present challenges but it’s also an opportunity for real estate investors to make a significant difference.

[Read the Market Trends – ‘Real estate investment in 2021: global outlook’, in full.](#)

The Pandemic Has Taken Cars Off Urban Streets. Will It Last?

- With a sharp drop in auto traffic due to Coronavirus, cities around the globe have closed streets to cars and expanded pedestrian thoroughfares and bikes lanes.

But as life edges back to normal (see publication date), will these initiatives survive, especially if virus-wary citizens shun mass transit?

[Access this article entitled, ‘The Pandemic Has Taken Cars Off Urban Streets. Will It Last’ in full.](#)

[Back to top](#)

China Dialogue – Policy briefing: EU-China climate engagement

- This briefing examines the policies driving decarbonisation in the EU and China, and the synergies and gaps that are shaping their cooperation.

[Access China Dialogue reports online.](#)

QSAND and the Sustainability Goals

The UN Sustainable Development Agenda, adopted by world leaders in 2015, maps out a 15-year plan to fight inequality, end poverty and tackle climate change challenges. Quantifying Sustainability in the Aftermath of Natural Disasters (QSAND) is a self-assessment tool to promote sustainable approaches and contributing to aid the achievement of several of these 17 goals in disaster affected global communities:



Source: Designing Buildings .co.uk Wiki (2019) 'Forgetting the big picture when considering sustainability' [online], last edited 31 March.

Note: Use of Wikis as a reference site

Wikipedia and use of other Wikis are increasingly being used by people in the academic community, as an easy source of information about anything and everything. However, citation of Wikipedia may not be considered acceptable, because Wikipedia is not a creditable source. It is important to note that whilst Wikipedia may be one of the Web's most popular reference sites, it is not classed as a credible resource because anyone can be a contributor to the website.

This can be avoided by following two simple rules:

- Remember that an encyclopaedia (which include Wikipedia and any other Wiki) can be a good starting point for research, and not an ending point.
- An encyclopaedia can be good for getting a general understanding of subject before you extend your study of the subject further. But you then must consider the subject in more depth using books, journals articles and other appropriate and credible resources. What you find in these other sources of information will be more detailed, more

precise, and more carefully reasoned than the summary you found in an encyclopaedia. The sources you reference/cite in your work will therefore be these more detailed sources you have used.

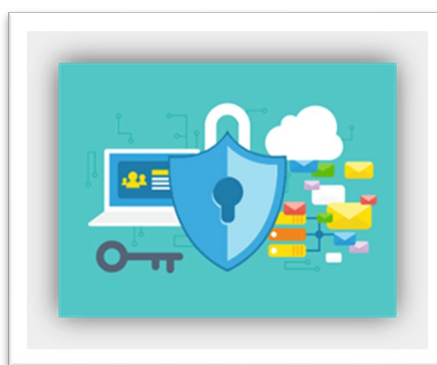
[Back to top](#)



Information Governance

UCEM is committed to advancing information governance and compliance, ensuring that the services provided comply with the General Data Protection Regulation (GDPR), Data Protection, Freedom of Information, Records management, Copyright, and Information Security.

Information Governance:



© 2020 iStockphoto LP. Royalty free image

To make sure that information is available in the right place and at the right time to support others, the e-Library ensures that the information services comply with data protection and copyright.

Data Protection

With new technologies constantly emerging and us finding ourselves moving further into an ever more digital direction, our personal data, how it is used and who has access to it becomes a growing and global concern for all.

The General Data Protection Regulation (GDPR) was the first legislative change in recent years to address these concerns, with a broad aim to invoke a cultural shift in the way organisations manage personal data.

Further information, advice, and guidance on Data protection, GDPR and more can be found at the Information Commissioner's Office (ICO), the UK's independent authority set up to uphold information rights in the public interest, promoting openness by public bodies and data privacy for individuals.

[Access the Information Commissioner's Office website](#)

[Back to top](#)

Latest Data Protection News [April 2021]

Facebook v Apple: The ad tracking row heats up

Data Privacy: New Apple iOS (Apple's Operating System) update includes new privacy features.

Apple has announced its new iOS 14.5 update for the iPhone and iPad, meaning users will have to "opt in" if they want their online activity tracked by companies.

GDPR – What's new? [April 2021] -

The Information Commissioner's Office (ICO) website has a 'What's new' section that is updated on a regular basis to highlight and link to any changes as they occur, for example:

March 21 – The ICO have published new guidance on the **national security exemption** in Part 2 of the DPA18.

January 21 - The ICO have published an Updated BCR communication following the EU-UK Trade and Co-operation Agreement to the **International transfers after the UK exit from the EU Implementation Period**.

December 2020 - The ICO published the new **Data Sharing Code of Practice**, alongside a **data sharing information hub** with further resources and support.

In addition, the ICO published detailed guidance on **sharing personal data with law enforcement authorities**, and detailed guidance on **data sharing and reuse of data by competent authorities for non-law enforcement purposes**.

November 2020 - The ICO published detailed guidance on **criminal offence data**, and September 2020 - The **ICO published the Accountability Framework**, which provides detailed guidance on complying with the accountability principle.

February 2020 – The ICO published detailed guidance on **codes of conduct** and **certification schemes**.

Access the Information Commissioner's Office 'What's new?' section of their website

ICO Latest News [April 2021] -

March 2021 – **Digital Regulation Cooperation Forum (DRCF) publishes its first annual plan of work** – On 10 March 2021 **The DRCF outlined its priorities for the coming year**, marking a step-change in coordination of regulation across digital and online services.

February 2021 – The Information Commissioner's Office (ICO) is urging all organisations considering using data analytics on personal data to look at its new toolkit.

It can be found at **ICO > For Organisations > Toolkit for organisations considering using data analytics**

[Back to top](#)

January 2021 – **The Information Commissioner looks ahead to 2021** - The ICO's immediate focus remains supporting organisations through the impacts of COVID-19.

The ICO have prioritised providing **advice and support on data protection related aspects of the pandemic** since the start, and will continue to do so, adjusting and responding to the new challenges the country will face until, well, 'all this is finished'. That work includes protecting people's rights and making sure data protecting is considered at the earliest stage of any innovations.

Maintaining data flows for a digital world – Information Commissioner Elizabeth Denham looks at the data protection aspects of the recently agreed UK-EU trade agreement.

December 2020 – **ICO calls on UK businesses to prepare to keep data flowing at the end of the transition period.**

November 2020 - **UK political parties must improve data protection practices.**

August 2020 - **Global privacy expectations of video teleconference providers** –

July 2020 - The Covid-19 pandemic has resulted in a sharp uptake in the use of video teleconferencing software, increasing risks around the collection and use of personal information.

Data protection and privacy authorities from around the world have **published on 21 July 2020 an open letter** to video teleconferencing companies, reminding them of their obligations to comply with the law and handle people's information responsibly, and provide principles to help identify and address key privacy risks to better protect people's personal information.

Further guidance provided by the ICO.

- **Freedom of Information Self-assessment toolkit** launched in 2020 helps identify gaps in compliance.
- Further updates have been made to **guidance for handling Subject Access Requests** including
- a **step-by-step guide for small businesses**
- **Building a controller-to-controller contract** + template contract with guidance

Read the Blog: 'Access to information: driving change through education, engagement and enforcement', in full

Copyright

"It is important to remember that Copyright material in digital form is protected in exactly the same way as Copyright material in any other format. For example, text and images on a website are protected by copyright in the same way as printed material.

Please note: if there is something you really want to use for learning materials and someone else owns the copyright ... **permission must be sought!**

[Back to top](#)

The copyright owner may wish to charge you, but often they just appreciate you asking them if they are happy for you to acknowledge their work and inform them of how the information will be used and who it will be circulated to”.

Source: Salmon, Prof. G., (2013), *E-tivities*, London: Routledge

The Copyright Licensing Agency Ltd (CLA)

The CLA are a licensing body as defined by the Copyright, Designs and Patents Act 1988 c.48 (as amended) [“CDPA”]

The CLA licence organisations to copy and re-use extracts from print and digital publications on behalf of copyright owners – authors, publishers, and visual artists. By ‘copying’ the CLA means photocopying, scanning and re-use of content from magazines, books, journals, electronic and online publications, as well as press cuttings or documents supplied by a licensed third party.

Having a CLA licence helps to reduce the risk and potential cost of copyright infringement. This requirement applies to any organisation in the business, education, public or charitable sectors.

Note: UCEM holds a CLA ‘Higher Education Photocopying and Scanning Licence’

[Access the Copyright Licensing Agency website for further information](#)

CLA Title Search tool

The [CLA Title Search tool](#) is an online search tool that lets you quickly find out what you can copy under your organisation’s CLA licence. Whether you’d like to photocopy and distribute an article to colleagues or upload a report to an intranet or VLE, the CLA Title Search simplifies the steps required to ensure compliance.

[Check permission at CLA Higher Education Licence.](#)

[Introducing a new CLA Step-by-Step Guide and Interactive Toolkit for those checking permissions within their licence.](#)

Latest Copyright News

Article 13: UK will not implement EU copyright law.

- Universities and Science Minister Chris Skidmore has said that the UK will not implement the EU Copyright Directive after the country leaves the EU.

Several companies have criticised the law, which would hold them accountable for not removing copyrighted content uploaded by users if it is passed.

EU member states have until 7 June 2021 to implement the new reforms, but the UK will have left the EU by then.

[Back to top](#)

Copyright is the legal right that allows an artist to protect how their original work is used.

[Read the full BBC Technology news item 'Article 13: UK will not implement EU copyright law'](#)

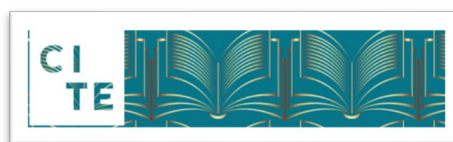
Government Guidance – Changes to copyright law from 1 January 2021

- This guidance covers the impacts on UK right holders, businesses, cultural heritage institutions and consumers.
Note: It is not legal advice.

[Access the GOV.UK 'Changes to copyright law from 1st January 2021', in full.](#)

Keeping abreast of the latest developments in Information Governance

Copyright & Information Technologies in Education (CITE)



© CLA 2020

As UCEM Information Governance Manager I regularly attend the Copyright Licensing Agency (CLA) CITE Forum.

The CITE Forum is a place to discuss the CLA's technology and licence offerings (such as the Digital Content Store) but also an opportunity for Higher Education Institute's to network, share and disseminate relevant copyright information. The Forum meets twice a year and publishes a biannual magazine for the CITE community containing the latest developments.

Copyright Licensing Agency (2019) '[CITE – 2020 Vision](#)', *[CITE Magazine, Winter 2019, No. 3](#)* [online].

Copyright Licensing Agency (2019) '[A CITE to behold](#)', *[CITE Magazine, Summer 2019, No. 2](#)* [online].

Copyright Licensing Agency (2018) *[CITE Magazine - A biannual magazine for the CITE Community, Winter 2018, No. 1](#)* [online].

UCEM is committed to advancing information governance and compliance, ensuring that the services we provide comply with **GDPR, Data Protection, Records Management, Copyright, and Information Security.**

Part of my role as involves keeping abreast of the latest developments and benchmarking the work I do against that of others. I also undertake regular Continuing Professional Development (CPD), and an element of this is attending the CITE Forum attending events and conferences provided through my professional body, CILIP – The Library and Information Association, and others.

[Back to top](#)

CILIP's National Copyright Conference 2020

Despite the current lockdown due to COVID-19, CILIP in association with Naomi Korn Associates, as well as great speakers and further experts in the field in attendance, made it happen albeit online. The national annual Copyright Conference provided an opportunity to delve deeper into copyright issues and gain a better understanding of how policy impacts on libraries and the information sector.

Sessions covered broad copyright impact for the profession incl.

- **Taking Rights Away? - Reconsidering obstacles to copyright reform.**

In policy debates in copyright, it is often argued that changes to the copyright legislation which may be favourable to librarians, information professionals and the users of their services, would deprive rights holders of established property rights. Such arguments were used to prevent the resolution of the '2039 problem' in unpublished works. In this keynote paper, Jonathan Griffiths, Professor of Intellectual Property Law, Queen Mary University of London argues that, when scrutinised carefully, these claims are often less convincing than they initially appear.

- **The EU Directive: Ground-breaking, Clarifying or Pointless**

The EU Copyright Directive: What does this mean for libraries and the cultural heritage sector? Positioning new directive in the context of existing EU legislation and case law Dr Andrea Wallace, Lecturer in IP, Exeter University, and Anthony Misquitta, General Counsel V&A discussed how the new Directive will affect libraries and cultural heritage organisations.

- **Copyright Risk Assessment Framework**

The National Libraries of Wales and Scotland have jointly developed and adopted a copyright risk acceptance framework. The framework is a pragmatic risk assessment and decision-making tool to aid the digitisation of collection material (Original Objects) and the making available of digitisations (Digital Surrogates). Fred Saunderson, Rights and Information Manager, National Library of Scotland.

- **Plan S from a Publishers Perspective: The benefits for Librarians and Academics**

The push to Open Access has created a huge change within the industry, as well as opportunities, for academics, publishers, and librarians. Sarah Greaves, PhD, will discuss Plan S from an Open Access publisher's perspective.

[Back to top](#)

- **Copyright in the Courts**

The session will consider a selection of recent, and not so recent judgements on copyright from UK courts, the Court of Justice of the EU and elsewhere as they affect librarians, archivists, and other information professionals. Tim Padfield, Author, *Copyright for Archivists and Records Managers*

- **Ensuring every pound and every licence advances Open Access: Transformative agreements,**

Libraries entering into transformative agreements with publishers changes the business model underlying scholarly journal publishing, enabling more open access. In this session Lorraine Estelle, Director, Information Power Limited (IPL) shared a free transformative agreement toolkit, and insight into how these can be implemented by a wide array of libraries.

- **CLA Licensing Update for Librarians and Information Professionals**

James Bennett, Head of Rights and Licensing, Copyright Licensing Agency updated attendees on the latest enhancements to the licences (esp. over this COVID-19 pandemic period and extending limits for licence holders) and workflow tools offered by the CLA and CLA Licence.

Note: The [CILIP National Copyright Conference 2021](#) is due to be held on 10th May, and will cover the following:

- The impact of Brexit on the copyright law in the UK.
- Responses to Covid in the provision of access and use of copyright resources.
- The crucial role of the copyright exceptions.
- Familiarised with key issues on the horizon such as Plan S.
- Current legislative, licensing and publishing related landscape and the latest copyright research and how these might impact your day-to-day work.

[#CILIPCopy21](#) / [#copyright](#)

The Challenges of Remote Working at Present

For those who work remotely all or part of the time already, you or your employer [depending on whether you are self-employed / freelancer or an employee] will have safeguards in place that enable you to operate securely when handling commercially sensitive or others' third-party data. The difference, in March 2020, is that at very short notice, organisations are having to move staff to homeworking often with literally hours' notice as the Government COVID-19 instructions are issued.

There are growing numbers of tips and survival guides online that include: Information Commissioner's Office (ICO) [Data protection and coronavirus: what you need to know](#).

[Back to top](#)

The challenges of remote working at present and point to consider from a data privacy perspective.

Provided within this article are points to consider from a data privacy perspective that include:

1. **Have a clear statement to all staff** stressing that “The protection of personal data that we hold, and use is important to us and must be handled at all times in a way that is compliant with data protection law and our Data Protection and Privacy policies. While we have to adapt to comply with the official guidance, we will adjust our working processes to allow us to deliver our services. These are time limited instructions that will be kept under review. At the end of the period then all data that is held temporarily on personal devices as a direct result of these exceptional times, will be deleted.” (Tullo 2020)
2. **Set out what use of data**, contact lists, customer documents are being allowed.
3. As part of this exceptional response to homeworking **keep a full record of where staff are working from and what equipment they are using.**
4. **State that you have assessed the best way of ensuring homeworking efficiency** and are proposing that personal devices and mobile phones can be used. That you will review this [weekly seems sensible at present] in line with experience and how staff report it is working.
5. **Reissue and emphasize your usual security arrangements –** Virus and password protection, not leaving data visible to others, having a PIN code, or not sharing their device with others in their family or household.
6. **Take care to be aware where data is being stored**, even if temporary so that the security risk is managed and assessed.
7. For the **weekly reviews** – have your Senior Leadership Team note the number of staff using personal devices, any queries, or issues they are finding and demonstrate that you are monitoring the situation and are flexible in closing it down if any specific concerns arise.
8. Choose your collaboration tool of choice and consider recording online meetings and note actions especially where team members are geographically spread out and where broadband speeds and kit may vary in quality.
9. You might also consider having a standard introduction for homeworking staff to explain that they are homeworking and not in the office, so callers understand the position.
10. This is where a nominated Data Protection Officer [DPO] or Data Officer can support the senior team in the messaging to colleagues.

Source: Tullo C, OBE (2020) '[The Challenges of Remote Working at Present](#)'. © [Naomi Korn Associates](#), 2020. Some Rights Reserved. The text is licensed for use under the Creative Commons Attribution Share Alike Licence (CC BY SA).

[Back to top](#)**Regarding UCEM we have followed these pointers:**

(i) A clear statement went to staff, and UCEM has a designated area within their central SharePoint site for Business Continuity Planning (BCP) that has the following folders containing

- Official Communications [Internal and External]
- Human Resources (HR) guidance and support
- Information Technology (IT) technical support, guidance, and documents

Data Protection guidance (incl. a new guidance note entitled, 'Processing Personal data when remote working'.

- The **UCEM Data Protection and Privacy Policies** have been updated and should be read in conjunction with IT Policies).
- & Hints and tips for working from home.

(ii) A retention and destruction schedule is in place that collates lists of data used within respective teams and departments; (iii) A register is kept of where staff are working from and equipment used; (iv) Regular online meetings and weekly All-staff keep everyone updated and ensuring regular communication; (v) IT provide regular updates and guidance; (vi) GDPR 2020 training has been launched to re-enforce the importance of knowing how data is used and where it is being stored, even if temporary so that risk is managed and assessed; (vii and viii) online equipment and collaboration tools are well established at UCEM as an online education provider, but are regularly monitored; (ix) As mentioned above, hints and tips for working from home are provided, & (x) UCEM has a designated Data Protection Officer (DPO).

Please note: There are regular updates -

- On the **UCEM Website**,
- **VLE Help Page** (for students), and
- for all within the **UCEM Website Home > Supported Online Learning > e-Library** current awareness services, incl.
 - Information blog and
 - ***Knowledge Foundations***.

#BE Informed

- A short **UCEM e-Library video** (used within UCEM Marketing, **Social Media business channels i.e. LinkedIn** to promote the e-Library, *Knowledge Foundations*, regular information blogs, and more)

“Perseverance will get you anywhere.”

@NASAPersevere / #NASAPersevere

[Back to top](#)

A to Z of useful references and web-links:

A - B - C - D - E - F - G - H - I - J - K - L - M

N - O - P - Q - R - S - T - U - V - W - X - Y - Z

A

Advance HE (Previously HEA – Higher Education Academy) is dedicated to helping higher education shape its future. Providing insight, enhancing organisational performance, developing, and connecting people, and accrediting achievements. Advance HE [online]. Further information is available at: www.advance-he.ac.uk [accessed 25 April 2021]

American Society of Civil Engineers (ASCE) Civil Engineering database provides free access to over 80 thousand abstracts taken from ASCE publications since 1973. ASCE [online]. Further information is available at: www.asce.org [accessed 25 April 2021]

Association of Researchers in Construction Management (ARCOM) brings together all those interested in construction management research. It aims to further the advancement of knowledge in all aspects of management in construction by support education, dissemination, and research. ARCOM [online]. Further information available at: www.arcom.ac.uk [accessed 25 April 2021]

AJ Buildings Library (AJBL) – The AJ Buildings Library showcases thousands of exemplar projects, most from the last 20 years but including major projects back to 1900. Available at: www.ajbuildingslibrary.co.uk [accessed 26 April 2021] (This valuable resource is just one part of the *Architects' Journal* subscription, available via the VLE e-Library > OpenAthens Library login > Construction Information Service (CIS) and/or EBSCO Business Source Premier).

ARCOM Abstracts database – contains open access of every ARCOM conference paper since 1997 and is now a major resource for all active researchers.

ARCOM Newsletters - contains the latest news from the industry.

[\[Back to A to Z\]](#)

B

BBC Education [online]. Further information available at: www.bbc.co.uk/news/education [accessed 25 April 2021]

BBC Search [online]. Further information available at: www.bbc.co.uk/search [accessed 25 April 2021]

BIDSTATS [online] – Free UK tenders' portal. Find UK public sector contracts and further information available at: <https://bidstats.uk/> [accessed 25 April 2021]

BIM Task Group – The Building Information Modelling (BIM) Task Group support and develop the objectives of the Government Construction Strategy and the requirement to strengthen the public sector's capability in BIM implementation [online]. **N.B.** This group and programme are now part of the University of Cambridge, **Centre for Digital Built Britain (CDBB)** [online]. Further

information is available at: www.cdbb.cam.ac.uk/AboutDBB/FAQs [accessed 25 April 2021]. Please refer to question 9 – What is the Digital Built Britain Programme? specifically.

BIMForum – The BIMForum’s mission is to facilitate and accelerate the adoption of building information modelling (BIM) in the AEC (Architecture, Engineering and Construction) industry. Further information is available via the BIMForum Website [online] and at: <http://bimforum.org> [accessed 25 April 2021]

BOMA International (Building Owners and Managers Association International) – a federation of 91 BOMA U.S. associations and 17 international affiliates. Founded in 1907, BOMA’s mission is to advance a vibrant commercial real estate industry through advocacy, influence, and knowledge. **BOMA Research and Resources** [online] and available at: www.boma.org/BOMA/Research-Resources [accessed 25 April 2021]

British and Irish Legal Information Institute (BAILLI) Case Law Search [online]. Further information available at: www.bailii.org/form/search_cases.html [accessed 25 April 2021]

British Council of Shopping Centres (BCSC) was the professional body and authoritative voice for retail-led regeneration and for the management of and investment in shopping places [online]. Note: BCSC has changed and is now **REVO – Retail. Property. Community.**

British Institute of Facilities Management (BIFM) – The BIFM is now the Institute of Workplace and Facilities Management (IWFM).

British Property Federation (BPF) – The British Property Federation is a membership organisation devoted to representing the interests of all those involved in real estate ownership and investment. BPF [online]. Further information available at: <https://bpf.org.uk> [accessed 25 April 2021]

Building Conservation.com [online] – Information resources for conservation, restoration, and repairs. Further information is available at: www.buildingconservation.com [accessed 25 April 2021]

Building Conservation.com Articles directory by subject [online]. Available at: www.buildingconservation.com/articles/articles.htm [accessed 25 April 2021]

Building Design Directory [online] – provides construction and environmental products / services / information for Architects, Engineers and Facility Managers. Further information is available at: www.buildingdesign.co.uk [accessed 25 April 2021]

Building Engineer [online] – Building Engineer website covers news and insights from the following topics: Building & Fire Safety; Business & Management; Construction & Building Materials; Energy & Sustainability; Health, Safety & Wellbeing; Policy & Regulations; Refurbishment; Technology & Digital Construction. Further information is available at: www.buildingengineer.org.uk/ [accessed 25 April 2021]

Building People - a technology platform and collaborative network, that enables connections and seeks to reduce the skills shortages across the Built Environment. Building People [online]. Further information is available at: www.buildingpeople.org.uk [accessed 25 April 2021]

Building Research Establishment (BRE) [online] is an independent and impartial, research-based consultancy, testing and training organisation, offering expertise in every aspect of the built environment and associated industries. Further information available at: <https://bregroup.com/about-us> [accessed 25 April 2021]

BRE A-Z of BRE Services (from Accreditation to Zero Carbon) [online]. Further information is available at: www.bregroup.com/a-z [accessed 25 April 2021]

BRE Case Studies [online]. Further information is available at: www.bre.co.uk/podpage.jsp?id=1744 [accessed 25 April 2021]

Building Services Research and Information Association (BSRIA) [online]. BSRIA is a test, instrumentation, research, and consultancy organisation, providing specialist services in construction and building services. Available at: www.bsria.co.uk [accessed 25 April 2021]

Building talk [online]. Available at: www.buildingtalk.com [accessed 25 April 2021] *Building Talk* is an email newsletter for Architects, Civil Engineers and Building Services Contractors.

[Back to A to Z]

C

Campaign to Protect Rural England (CPRE) campaign for a beautiful and living countryside. They work to protect, promote, and enhance our towns and countryside to make them better places to live, work and enjoy, and to ensure the countryside is protected for now and future generations. CPRE [online]. Available at: www.cpre.org.uk [accessed 25 April 2021]

CBRE Research and Resources - CBRE sets the standard for global real estate research by providing clients with accurate and insightful market knowledge. CBRE [online]. Available at: www.cbre.com/research-and-reports [accessed 25 April 2021]

CPRE Resources provides the latest news articles, policy guidance notes, published reports and research surrounding the following - Countryside, Farming and food, Housing and planning, Energy and Waste, and Transport. CPRE Resources [online]. Available at: www.cpre.org.uk/resources [accessed 25 April 2021]

Centre for Architecture and Built Environment Research (CABER) seeks to develop innovative approaches, procedures, technologies, and techniques that support the design, management, reconfiguration, maintenance and operation of buildings, their fabric, and the environments they create. Note: CABER incorporates the previous Centre for Construction and Property Research (CPRC). CABER [online] and available at: www1.uwe.ac.uk/et/research/caber.aspx [accessed 25 April 2021]

The Center for Construction Research and Training (CPWR) is dedicated to reducing occupational injuries, illnesses, and fatalities in the construction industry through research, training, and service programs. CPWR [online] and available at: www.cpwr.com [accessed 25 April 2021]

Centre for Digital Built Britain (CDBB) is a partnership between the Department of Business, Energy & Industrial Strategy, and the University of Cambridge to deliver a smart digital economy for infrastructure and construction for the future and transform the UK construction industry's approach to the way we plan, build, maintain and use our social and economic infrastructure. CDBB [online]. Available at: www.cdbb.cam.ac.uk/AboutDBB [accessed 25 April 2021]

Centre for Sustainable Energy (CSE) is an independent national charity that shares our knowledge and experience to help people change the way they think and act on energy.

CSE Resources [online] include - Reports & publications, Toolkits, Advice leaflets, Websites, *Energise* newsletter, Videos on The fundamentals, Improving your community building, Community-wide energy saving projects, Neighbourhood and low carbon planning, Renewable energy projects, and further Resources for schools and educators. Available at: www.cse.org.uk/local-energy/resources [accessed 25 April 2021]

Chartered Association of Building Engineers (CABE) is a member-focused non-profit organisation that brings like-minded professionals together. CABE shows knowledge, raises standards and developments professionals enabling a professional construction sector that works to create better, safer, and more sustainable buildings that enhance people's lives. CABE [online]. Available at: <https://cbuide.com/> [accessed 25 April 2021]

Chartered Institute of Building (CIOB) [online]. The Chartered Institute of Building is the international voice of the building professional, representing an unequalled body of knowledge concerning the management of the total building process. Available at: www.ciob.org [accessed 25 April 2021]

China Dialogue [online] – China and the world discuss the environment. Available at: www.chinadialogue.net [accessed 25 April 2021]

CIOB Library Incl. Library and Information Services [online]. Available at: www.ciob.org/library [accessed 25 April 2021]

CIOB's Construction Manager journal [online]. Available at: www.constructionmanagemagazine.com [accessed 25 April 2021]

CIOB's Global Construction Review journal [online]. Available at: www.globalconstructionreview.com/ [accessed 25 April 2021]

CIOB's Policy and Public Affairs portal [online]. Available at: www.ciob.org/industry/policy-research [accessed 25 April 2021]

The CIT-eA Project Creating Innovative Technology – Enhanced Assessments – a research project that explored ways to increase the number of assessments in Further and Higher Education using technology. The CIT-eA Project [online]. Available at: <http://citea.digitalinsite.co.uk> [accessed 25 April 2021]

Cities / buildings images database [online]. Available at: www.washington.edu/ark2 [accessed 25 April 2021] is a collection of images of buildings and cities from around the world aimed at students, researchers, and educators.

C-Link is a procurement software company who also provide resources (incl. guides, eBooks, and other materials) created to help you make more money on your construction project. C-Link [online]. Available at: www.C-Link.com [accessed 25 April 2021]

College of Estate Management (CEM) – See University College of Estate Management (UCEM)

Commercial Real Estate Services (CBRE) is the world's largest real estate services provider, with a preeminent leadership position in virtually all key business centers globally. CBRE [online]. Available at: www.cbre.co.uk [accessed 25 April 2021]

Community-Led Housing (CLH) Toolkit: a resource for local authority and housing professionals' [online]. Available at: <https://clhtoolkit.org/> [accessed 25 April 2021]. This Toolkit provides a wealth of technical and non-technical information on a broad range of issues relevant to CLH. There are five Toolboxes, covering (i) Housing (ii) Communities (iii) Legal (iv) Planning and (v) Finance.

Confederation of British Industry (CBI) is the UK's premier business lobbying organisation, providing a voice for employers at a national and international level. CBI [online]. Available at: www.cbi.org.uk [accessed 25 April 2021]

Conference on Training in Architectural Conservation (COTAC) was formed in 1959 to improve the standard of education of everyone involved in building conservation, including

craftsmen, professionals, and homeowners. COTAC [online]. Available at: <http://ihbconline.co.uk/cotac2> [accessed 25 April 2021]

COTAC Digital Bibliography [online]. Available at: http://cotac.global/digital_bib/ [accessed 25 April 2021]

Constructing Excellence (delivered with **bre**) is a platform for industry improvement to deliver excellence through clients, industry, and users through collaborative working. Resources include publications, tools, and newsletter. Constructing Excellence [online]. Available at: <http://constructingexcellence.org.uk/> [accessed 25 April 2021]

Construction Enquirer is a news website in construction. Construction Enquirer [online]. Available at: www.constructionenquirer.com [accessed 25 April 2021]

The **Construction Index** [online] provides a wide range of information services for the UK construction industry, that include a search engine of construction companies, daily construction news, market data, email newspaper letter, and Case Law analysis and legal commentary. Further information is available at: www.theconstructionindex.co.uk [accessed 25 April 2021].

Construction Industry Council (CIC) – The representative forum for the professional bodies, research organisations and specialist business association in the construction industry. CIC [online] and available at: <http://cic.org.uk> [accessed 25 April 2021]

The **Construction Industry Research and Information Association** (CIRIA) [online]. Further information and resources are available at: www.ciria.org/default.aspx [accessed 25 April 2021]

Construction Industry Training Board (CITB) is the training board for the construction industry and partner in Construction Skills, the Sector Skills Council. CITB [online]. Available at: www.citb.co.uk [accessed 25 April 2021]

Construction Manager is the magazine of the Chartered Institute of Building (CIOB) [online] and available at: www.constructionmanagermagazine.com/ [accessed 25 April 2021]

Construction News [online]. Available at: www.constructionnews.co.uk [accessed 25 April 2021]

Construction Products Association (CPA) represents the UK's manufacturers and distributors of construction products and materials. Construction Products Association [online]. Further information is available at: www.constructionproducts.org.uk [accessed 25 April 2021]

Construction Project Information Committee (CPIC), responsible for providing best practice guidance on the content, form, and preparation of construction production information, and making sure this best practice is disseminated throughout the UK construction industry. CPIC [online]. Available at: www.cpic.org.uk [accessed 25 April 2021]

Construction and Property Research Centre (CPRC), University of the West of England (UWE) – the CPRC's research activity is focused around the three inter-related stages of the built environment lifecycle, namely design, construction, and maintenance. Note: The UWE **Centre for Architecture and Built Environment Research** (CABER) now incorporates the CPRC.

Contractors World magazines (incl. *Contractors World International* and *Contractors World UK & Ireland*) are the leading international digital publications. Delivering site reports, equipment reviews and comments of interest on the construction, mining, quarrying and related industries. Contractors World [online]. Available at: <http://cwmags.com/> [accessed 25 April 2021].

COPAC exposes rare and unique research material by bringing together the catalogues of c.90 major UK and Irish Libraries. In a single search you can discover the holdings of the UK's national libraries (including the British Library), many University libraries, and specialist libraries. Note: From August 2019 Copac was replaced by **Jisc's Library Hub Discover**.

Council for British Archaeology (CBA) is an independent charity bringing together members, supporters, and partners to give archaeology a voice and safeguard it for future generations. Archaeology for all [online]. Available at: <http://new.archaeologyuk.org> [accessed 25 April 2021]

[\[Back to A to Z\]](#)

D

Delta T [online] is the Building Services Research and Information Association's quarterly journal.

Designing Buildings Wiki [online] and available at: www.designingbuildings.co.uk/wiki/Home [accessed 25 April 2021] is an industry-wide, cross-discipline forum for finding and sharing information.

Designing Buildings Wiki – Student resources [online] and available at: www.designingbuildings.co.uk/wiki/Student_resources [accessed 25 April 2021] has a wide range of resources aimed at students of the built environment, as shown here.

Designing Buildings Wiki – Construction industry acronyms [online] and available at: www.designingbuildings.co.uk/wiki/Construction_industry_acronyms [accessed 25 April 2021] providing a list of commonly used construction industry acronyms.

The **Design Council** [online] champions great design that improves lives and makes things better and available: www.designcouncil.org.uk [accessed 25 April 2021]. See also **Inclusive Design Hub for the Built Environment** (a project of The Design Council).

Directory of Open Access Books (DOAB) is a service which harvests details of academic and mainly peer-reviewed books published on open access. DOAB [online]. Available at: www.doabooks.org/doab [accessed 25 April 2021]

Directory of Open Access Journals (DOAJ) covers all open access scientific and scholarly journals, using a quality control system to guarantee the content. DOAJ [online]. Available at: <https://doaj.org> [accessed 25 April 2021]

[\[Back to A to Z\]](#)

E

Education and Employers Research - Online research library marks its tenth anniversary. This online library provides a comprehensive repository of different and effective approaches to employer engagement and careers education. It brings together the latest thinking with selected research published over the past 40 years. Education and Employers [online]. Available at: www.educationandemployers.org/research-type/research-library [accessed 25 April 2021]

The Economics Network [online] provides publications, events, and other resources to support university teachers of economics throughout the UK and worldwide. Available at: www.economicsnetwork.ac.uk [accessed 25 April 2021]

EngineeringUK is a not-for-profit organisation, which works in partnership with the engineering community to inspire tomorrow's engineers and increase the number and diversity of young people choosing academic and vocational pathways into engineering. EngineeringUK [online]. Available at: www.engineeringuk.com [accessed 25 April 2021]

Engineering and Physical Sciences Research Council (EPSRC) is the main UK government agency for funding research and training in engineering and the physical sciences, investing more than £800 million a year in a broad range of subjects – from mathematics to materials science, and from information technology to structural engineering. EPSRC [online]. Available at: www.epsrc.ac.uk [accessed 25 April 2021]

English Heritage cares for over 400 historic buildings, monuments, and sites – from world-famous prehistoric sites to grand medieval castles, from Roman forts on the edges of the empire to a Cold War bunker. English Heritage [online]. Further information is available at: www.english-heritage.org.uk [accessed 25 April 2021]. Note: English Heritage has now separated into two organisations. If you are looking for information on listing, planning, grants or heritage research and advice, please visit **Historic England**.

Estates Gazette The UK's largest commercial property news team. *Estates Gazette Interactive* [online]. Available at: www.egi.co.uk [accessed 25 April 2021] incl. ***Estate Gazette, News from the nationals*** – Round-up of the top property stories with quick links.

European Real Estate Society (ERES) was established in 1994 to create an international real estate network between academics and professionals across Europe. ERES [online]. Further information is available at: www.eres.org [accessed 25 April 2021].

ERES Digital Library [online] and available at: www.eres.org/index.php/activities/libraryeres [accessed 25 April 2021]

[Back to A to Z]

G

Great Buildings [online]. Available at: www.greatbuildings.com [accessed 25 April 2021] provides a database of buildings around the world and across all historic periods. You can search the database by building names, place, or architect name. It provides access to 3D models, photographic images, and architectural drawings.

Glenigan [online]. Available at: www.glenigan.com [accessed 25 April 2021] provides UK construction project sales leads, market analysis, forecasting, and company intelligence.

Global Research Gateway: CBRE's online resource for real estate research and reports. CBRE Global Research Gateway [online]. Available at: www.cbre.com/research-and-reports [accessed 25 April 2021]

Global Construction Review – An online journal from the Chartered Institute of Building (CIOB) [online]. Available at www.globalconstructionreview.com [accessed 25 April 2021]

The Green Construction Board (GCB) is a consultative forum consisting of key members of UK construction and property industry. GCB [online]. Further information is available at: <https://cic.org.uk/projects/project.php?s=green-construction-board> [accessed 25 April 2021]

The Guardian, Housing network – providing insight, advice, and best practice from your community. The Guardian, Housing network [online]. Further information is available at: www.guardian.co.uk/housing-network [accessed 25 April 2021]

The Guardian, Higher Education / Universities [online]. Further information is available at: www.guardian.co.uk/higher-education-network [accessed 25 April 2021]

[Back to A to Z]

H

Health and Safety Executive (HSE) is the national independent watchdog for work-related health, safety, and illness. HSE are an independent regulator and act in the public interest to reduce work-related death and serious injury across Great Britain's workplaces. HSE [online]. Available at: www.hse.gov.uk/index.htm [accessed 25 April 2021]

HSE, Health & Safety in the construction industry [online]. Further information is available at: www.hse.gov.uk/construction [accessed 25 April 2021]

HSE Publications [online]. Available at: www.hse.gov.uk/pubns/index.htm [accessed 25 April 2021]

Heritage Alliance - The largest coalition of heritage interests in England, the Heritage Alliance is the umbrella body for national and major regional Heritage NGOs. Heritage Alliance [online]. Available at: www.theheritagealliance.org.uk [accessed 25 April 2021]

Heritage Update: the online edition of the fortnightly Heritage Alliance's *Heritage Update* e-bulletin [online] and available at: www.theheritagealliance.org.uk/update [accessed 25 April 2021]

Heritage Help - Created by the Joint Committee of the National Amenity Societies, Heritage Help offers information and advice on matters related to the management and protection of local historic environments. Heritage Help [online]. Available at: <http://heritagehelp.org.uk> [accessed 25 April 2021]

Higher Education Academy (HEA) – The Higher Education Academy champions excellent learning and teaching in higher education. The HEA are a national and independent organisation, funded by the four UK Higher Education funding bodies and by subscriptions and grants. Note: HEA is now **Advance HE**.

Higher Education Empirical Research (HEER) Database comprises summaries of the latest published research on a range of topics related to higher education. HEER [online]. Available at: www.srhe.ac.uk/links/higher_education_statistics_and_research.asp [accessed 25 April 2021]

Historic England is the public body that looks after England's historic environment. Historic England champion historic places, helping people understand, value and care for them. Further information is available at: www.historicengland.org.uk [accessed 25 April 2021]

Historic Environment Local Management (HELM) - provides accessible information, training, and guidance to decision makers in local authorities, regional agencies, and national organisations whose actions affect the historic environment. Note: All HELM web content on the Historic England website [online] and available at: <https://historicengland.org.uk/services-skills/training-skills/helmtraining> [accessed 25 April 2021].

Home Builders Federation (HBF) represents and serves its members in a range of ways including; Ensuring senior politicians and government officials are aware of housing issues and the challenges faced by our members; and working with Government officials to ensure housing policies are introduced that facilitate housing supply, in a way that is workable for the industry [online]. Available at: www.hbf.co.uk [accessed 25 April 2021]

House Building Careers (part of HBF). Here you will be able to learn about the home building industry and how it benefits you, your community, and the country as a whole [online]. Further information available at: <http://housebuildingcareers.org.uk> [accessed 25 April 2021]

[Back to A to Z]

Inclusive Design Hub for the Built Environment is a collection of the latest guidance and best practice on inclusive design in the built environment and a project of **The Design Council** [online]. Available at: www.designcouncil.org.uk/projects/inclusive-design-hub-built-environment [accessed 25 April 2021]

INFABODE connects its community of users with industry information from the Real Estate sector on one customisable online platform. Infabode reduces the amount of time people spend trying to

access key information from the Real Estate industry. **INFABODE** [online]. Available at: www.infabode.com [accessed 25 April 2021]

Institution of Civil Engineers (ICE) is a registered charity that strives to promote and progress civil engineering. ICE [online]. Available at: www.ice.org.uk [accessed 25 April 2021]

ICE Virtual Library [online]. Available at: www.icevirtuallibrary.com [accessed 25 April 2021] is a free database that indexes all ICE journals.

International Council for Open and Distance Education (ICDE) is the leading global membership organisation for enhancing the quality of open, distance, flexible and online education, including e-Learning. ICDE [online]. Available at: www.icde.org [accessed 25 April 2021]

Institute of Historic Building Conservation (IHBC) is the principal professional body for building conservation practitioners and historic environment specialists working in England, Northern Ireland, Scotland, and Wales, with connections to the Republic of Ireland. IHBC [online]. Available at: www.ihbc.org.uk [accessed 25 April 2021]

Institute of Workplace and Facilities Management (IWFM) – Formerly the British Institute of Facilities Management, BIFM is now the IWFM. The workplace has been incorporated into their new brand so that the status of the professional can help take careers further, regardless of specialism. IWFM [online]. Further information is available at: www.iwfm.org.uk [accessed 25 April 2021]

IWFM Insight – discover leading research and resources for the workplace and facilities management profession. IWFM Insight [online]. Available at: www.iwfm.org.uk/insight [accessed 25 April 2021]

IWFM News – discover the latest news affecting the profession and gain expert insight and advice. IWFM News [online] Available at: www.iwfm.org.uk/news [accessed 25 April 2021]

IWFM Digital Magazine, facilitate - Informing workplace and facilities management professionals. IWFM *facilitate* [online]. Available at: www.facilitatemagazine.com/ [accessed 25 April 2021]

ITcon – The **Journal of Information Technology in Construction** is a peer-reviewed scholarly journal on the use of IT in architecture, civil engineering, and facility management. *ITcon* [online]. Available at: www.itcon.org [accessed 25 April 2021]

[Back to A to Z]

J

JISC Library Hub Discover – Library Hub Discover replaces COPAC* and SUNCAT, offering increased coverage of university libraries along with new facilities and improved response times. Library Hub Discover currently contains 42,397,777 records created from 106,833,532 records contributed by 144 institutions. Jisc Library Hub Discover [online]. Available at: <https://discover.libraryhub.jisc.ac.uk> [accessed 25 April 2021].

JORUM Archive – After 13 years delivering and sharing content across the higher education, further education and skills sectors the Jorum service and website was retired on 30 September 2016. However, many of the open education resources (OER) that were available in Jorum, access to their Jorum Archive can be accessed via the JISC website [online]. Available at: www.jisc.ac.uk/website/legacy/jorum [accessed 25 April 2021] where you can also gain access to JISC's full digital resources offer.

Journal of Online Learning and Teaching (JOLT) - The [MERLOT Journal of Online Learning and Teaching](#) is a peer-reviewed, open-access, online publication that aims to promote scholarship in the use of the Internet and web-based multimedia resource in higher education.

JournalTOCs is the largest, free collection of scholarly Journal Title of Contents (TOCs) [online]. Available at: www.journaltoCs.ac.uk/index.php [accessed 25 April 2021]

[\[Back to A to Z\]](#)

L

[Leeds Beckett University's – School of the Built Environment, Engineering and Computing](#)

[online]. Further information that includes Subject Area Research – 1) Civil Engineering and Building Services Engineering, 2) Planning, Housing and Human Geography, and 3) Surveying, Construction and Project Management is available at: www.leedsbeckett.ac.uk/school-of-built-environment-engineering-and-computing/research [accessed 25 April 2021]

[Leeds Beckett University's - Leeds Sustainability Institute](#) [online]. Further Information is available at: www.leedsbeckett.ac.uk/leeds-sustainability-institute [accessed 25 April 2021]

[Leeds Beckett University – The Library](#) [online]. Available at: <http://libguides.leedsbeckett.ac.uk/home> [accessed 25 April 2021]

[Lexology](#) is a comprehensive source of international legal updates, analysis, and insights. Lexology publish in excess of 450 articles every day from over 1,100 law firms and service providers worldwide across 50 work areas in 25 languages. Lexology [online]. Available at: www.lexology.com [accessed 25 April 2021]

[Local Government Association](#) (LGA) is the national voice of local government. They work with councils to support, promote, and improve local government. LGA [online]. Available at: www.local.gov.uk [accessed 25 April 2021]

[LGA Knowledge Hub](#) - Knowledge Hub is the public sector's professional social network which helps people in local government connect and share online in a secure environment [online]. Available at: <https://khub.net> [accessed 25 April 2021]

[\[Back to A to Z\]](#)

M

[Multimedia Educational Resource for Learning and Online Teaching](#) (MERLOT). The MERLOT project began in 1997, when the California State University Center for Distributed Learning (CSU-CDL) developed and provided free access to MERLOT [online]. Available at: www.merlot.org/merlot [accessed 25 April 2021]. MERLOT is a curated collection of free and open online teaching, learning, and faculty development services contributed and used by an international education community.

[\[Back to A to Z\]](#)

N

[National Building Information Modelling \(BIM\) Library](#), the construction industry's free-to-use resource of the NBS (trading name of RIBA Enterprises Ltd) standard BIM content [online]. Available at: www.thenbs.com/our-tools/nbs-national-bim-library [accessed 25 April 2021]

National Building Specification (NBS) is an integrated global platform for everyone involved in the design, supply, and construction of the built environment. NBS [online]. Available at: www.thenbs.com [accessed 25 April 2021]

NBS Knowledge [online] is available at: www.thenbs.com/knowledge [accessed 25 April 2021]

NBS Publication Index [online] - this index provides information about key industry documents which are or have been available in The Construction Information Service (CIS), or cited in NBS Guidance. Further information is available at: www.thenbs.com/Publicationindex [accessed 25 April 2021]

NBS Digital Construction Conversations podcasts – New to 2021, NBS are talking to inspirational industry leaders about the trends and technologies impacting the construction industry – from sustainability to regulations to change management. NBS Digital Construction Conversations [online]. Available at: www.thenbs.com/podcast [accessed 25 April 2021]

National Skills Academy for Construction (NSAfC) is an industry-led framework supporting clients and contractors to identify, develop and realise employment and skills solutions across construction projects. CITB, NSAfC [online]. Available at: www.citb.co.uk/national-skills-academy-for-construction [accessed 25 April 2021]. Note: It is facilitated by the Construction Industry Training Board (CITB).

The National Trust protect historic houses, gardens, mills, coastline, forests, woods, fens, beaches, farmland, moorland, islands, archaeological remains, nature reserves, villages, and pubs. The National Trust [online]. Available at: www.nationaltrust.org.uk [accessed 25 April 2021]

National Trust's Land & landscape [online]. Available at: www.nationaltrust.org.uk/land-and-landscape [accessed 25 April 2021]

New Civil Engineer (NCE) a weekly magazine published for the Institution of Civil Engineers (ICE). NCE [online]. Available at: www.nce.co.uk [accessed 25 April 2021]

[Back to A to Z]

O

Online Learning Consortium (OLC) is devoted to advanced quality online learning by providing professional development, instruction, best practice publications and guidance to educators, online learning professionals and organisations around the world. Online Learning Consortium [online] and further information is available at: <http://onlinelearningconsortium.org/> [accessed 25 April 2021]

OLC's Online Learning – the official journal of the Online Learning Consortium. *Online Learning* [online]. Available at: <http://onlinelearningconsortium.org/read/> [accessed 25 April 2021]

Open Education Resources, Research Hub – OER Hub gathers research on the impact of open education resources (OER) on learning and teaching practices. OER Hub [online]. Further information is available at: <http://oerhub.net/> [accessed 25 April 2021]

Open Praxis – published by the International Council for Open and Distance Education – ICDE, *Open Praxis* is a peer-reviewed open access scholarly journal focusing on research and innovation in open, distance and flexible education. *Open Praxis* [online]. Available at: <http://openpraxis.org/index.php/OpenPraxis/index> [accessed 25 April 2021]

Open University (OU) UK [online] and available at: www.open.ac.uk [accessed 25 April 2021]

Open University (OU) UK, Institute of Education Technology [online] and available at: www.open.ac.uk/iet/main [accessed 25 April 2021]

Organisation for Economic Cooperation and Development (OECD) iLibrary is the online library of the OECD, featuring its books, papers and statistics and is the gateway to OECD's analysis and data. Note: It replaced SourceOECD. OECD iLibrary [online]. Available at: www.oecd-ilibrary.org [accessed 25 April 2021]

[Back to A to Z]

P

Parliament.uk, Research briefings produced by the House of Commons Library, the House of Lords Library and the Parliamentary Office of Science and Technology (POST). Parliament, Parliamentary business, Publications and records, Research briefings. Parliament.UK [online]. Further information is available at: <http://researchbriefings.parliament.uk> [accessed 25 April 2021]

Planning, BIM & Construction Today – The PBC Today website has compelling and informative features, news and products for a diverse audience serving a wide construction sector. PBC Today [online]. Available at: www.pbctoday.co.uk/news [accessed 22 April 2021]

Planning Advisory Service (PAS) provide consultancy and peer support, training sessions and online resources to help local authorities understand and respond to planning reform. PAS [online]. Available at: www.local.gov.uk/pas [accessed 25 April 2021].

Planning Officers Society (POS) is the voice for public sector planning practitioners, pursuing good and effective planning practice within local government [online]. Available at: www.planningofficers.org.uk [accessed 25 April 2021]

The Planning Portal is the UK Government's online planning and building regulations resource for England and Wales [online]. Available at: www.planningportal.co.uk [accessed 25 April 2021]

The Prince's Foundation was created by the merging of The Prince's Foundation for Building Community, The Prince's Regeneration Trust, The Great Steward of Scotland's Dumfries House Trust and The Prince's School of Traditional Arts in 2018. This combined force enables the charity to achieve HRH's goal of creating harmonious communities, through three core tiers. The Prince's Foundation [online]. Available at: <https://princes-foundation.org> [accessed 25 April 2021]

Property People's Network (PPN) is open to all interested in land and property and provides a forum to network through a range of social activities and visits [online]. Available at: www.ucem.ac.uk/student-community/property-peoples-network [accessed 25 April 2021]

Property Week – Commercial property news. *Property Week* [online]. Available at: www.propertyweek.com [accessed 25 April 2021]

[Back to A to Z]

R

Regeneration and Renewal – Placemaking Resource incorporating Regeneration & Renewal magazine [online]. Available at: www.placemakingresource.com [accessed 25 April 2021]

Residential Landlord – an online resource providing Landlord Resources, a Document Download Centre (containing templates and free tenancy agreements to amend and use as required), news and views, advice, and guidance [online]. Further information is available at: residentiallandlord.com [accessed 25 April 2021]

Revo – Retail. Property. Community (formerly BCSC (British Council of Shopping Centres) is the professional body and authoritative voice for retail property and placemaking-led regeneration and for the management of and investment in shopping places [online]. Further information is available at: www.revocommunity.org [accessed 25 April 2021]

The Royal Institute of British Architects (RIBA) is a global professional membership body driving excellence in architecture [online]. Further information is available at: www.architecture.com [accessed 25 April 2021]

RIBA Library – Visit the RIBA Library [online]. Available at: www.architecture.com/contact-and-visit/riba-library [accessed 25 April 2021]

RIBA Home > Knowledge and resources > Resources > RIBA Plan of Work [online]. Further information is available at: www.architecture.com/knowledge-and-resources/resources-landing-page/riba-plan-of-work [accessed 25 April 2021]

Royal Institution of Chartered Surveyors (RICS) is an independent body committed to setting and upholding the highest standards of excellence and integrity in land, property, and construction. RICS [online]. Available at: www.rics.org/uk [accessed 25 April 2021]

RICS > News & Insights [online]. Available at: www.rics.org/uk/news-insight [accessed 25 April 2021]

RICS > Upholding Professional Standards [online]. Available at: www.rics.org/uk/upholding-professional-standards [accessed 25 April 2021]

RICS Publications - RICS publishes a range of journals that are **free** to view online. Available at: www.rics.org/uk/news-insight/publications/ [accessed 25 April 2021]

RICS Library Services and Online catalogue - 2500 electronic documents selected and catalogued, plus books, magazine articles, law reports and transcripts [online]. Available at: <https://library.rics.org/> [accessed 25 April 2021]

Royal Town and Planning Institute (RTPI) is the UK's leading planning body for spatial, sustainable, and inclusive planning and is the largest planning institute in Europe with over 23,000 members. In 2014 they celebrate their Centenary. RTPI [online]. Available at: www.rtpi.org.uk [accessed 25 April 2021]

[Back to A to Z]

S

Savills Research – Savills Research, Insight & Opinion provides advice and analysis to clients across the UK, with specialists in commercial, residential, and rural property research [online] and available at: www.savills.co.uk/insight-and-opinion/research.aspx [accessed 25 April 2021]

Shoosmiths Insights & articles – Shoosmiths is a major UK law firm with a network of offices working together as one team. Read the latest insights, articles, and commentary from Shoosmiths or explore their content library that include – Placemaking; Real estate; Diversity & Inclusion; Litigation & disputes; Governance; Employment, and more. Shoosmiths [online]. Available at: www.shoosmiths.co.uk/insights [accessed 25 April 2021]

Specification Online – the free to use news and online products resource for specifiers working across the architectural and building sector [online] and available at: <http://specificationonline.co.uk> [accessed 25 April 2021]

Supply Chain Sustainability School represents a common approach to developing sustainability competence in the supply chain. It is a free resource available to any supplier and is part of their continued commitment to lead the industry into a brighter, more sustainable future. Supply Chain Sustainability School [online]. Further information is available at: www.supplychainschool.co.uk/uk/default-home-main.aspx [accessed 25 April 2021]

[Back to A to Z]

T

The Telegraph – Property and construction industry - The latest news, analysis and share prices on Britain's biggest construction and property companies. The Telegraph, Property and Construction Industry [online]. Available at: www.telegraph.co.uk/property-and-construction-industry [accessed 25 April 2021]

Tomorrow's Engineers brings together resources and evidence to support the engineering community in getting the most out of their engagement activity. Tomorrow's Engineer [online]. Available at: www.tomorrowsengineers.org.uk [accessed 25 April 2021]

Trust in Digital Repositories (TrustDR) – a research project that examined how to effectively manage the legal aspects of digital collections of learning resources and produced a policy development toolkit. TrustDR [online]. Available at: <https://trustdr.digitalinsite.co.uk> [accessed 25 April 2021]

[Back to A to Z]

U

University College of Estate Management (UCEM) is the leading provider of supported distance learning for real estate and construction professionals. UCEM [online]. Available at: www.ucem.ac.uk [accessed 25 April 2021]

UCEM e-Library is a comprehensive and valuable online resource, supplementing teaching and learning materials and enabling students to access a wealth of subject-specific and credible information to support them throughout their studies. UCEM e-Library [online]. Available at: www.ucem.ac.uk/e-library [accessed 25 April 2021]

University of the West of England (UWE), Centre for Architecture and Built Environment Research (CABER) seeks to develop innovative approaches, procedures, technologies, and techniques that support the design, management, reconfiguration, maintenance and operation of buildings, their fabric, and the environments they create. Note: CABER incorporates the previous Centre for Construction and Property Research (CPRC). CABER [online]. Available at: www1.uwe.ac.uk/et/research/caber.aspx [accessed 25 April 2021]

UWE Educational Resources for the Built Environment (ERBE) produces unique and highly respected educational resources for academic and professional use and incorporates the **Video Project** and the **Construction Website**. Further information can be found on the ERBE website [online] and available at: www1.uwe.ac.uk/et/cp/erbe.aspx [accessed 25 April 2021]

UWE, ERBE, Construction Films concentrate on domestic building construction. The films explain the principles of modern construction and, where appropriate, trace its evolution over the last 100 years. ERBE Construction Films [online]. Further information is available at: www1.uwe.ac.uk/et/cp/erbe/constructionfilms.aspx [accessed 25 April 2021]

UWE, ERBE, The Construction Website is an interactive encyclopaedia covering construction, conservation and building history. It is expanded and revised on an annual basis [online]. Further information is available at: www1.uwe.ac.uk/et/cp/erbe/constructionweb.aspx [accessed 25 April 2021]

UWE, Library, Search for things: A-Z [online]. Available at: www1.uwe.ac.uk/library/searchforthingsa-z.aspx [accessed 25 April 2021]

UWE. Research publications and reports – Providing immediate world-wide open access to all UWE's research output. Research at UWE Bristol [online]. Available at: www1.uwe.ac.uk/research.aspx [accessed 25 April 2021]

[\[Back to A to Z\]](#)

V

Virtual Training Suite - The Virtual Training Suite is a national eLearning service for Higher and Further Education in the UK, offering FREE "teach yourself" tutorials delivered over the Web, for students, lecturers and researchers who want to learn what the Internet can offer in their subject. This is a public service from **JISC**.

Y

Yale Environment 360 - an online magazine offering opinion, analysis, reporting, and debate on global environmental issues. We feature original articles by scientists, journalists, environmentalists, academics, policy makers, and business people, as well as multimedia content and a daily digest of major environmental news. *Yale Environment 360* [online]. Available at: <https://e360.yale.edu/> [accessed 25 April 2021]

[\[Back to A to Z\]](#)

Z

Zetoc: Informing Research - The monitoring and search service for global research publications, providing access to over 36,000 journals and more than 59 million article citations and conference papers through the British Library's electronic table of contents and over 875,000 Open Access (OA) article citations and conference papers from PubMed. Zetoc [online]. Available at: <http://zetoc.jisc.ac.uk/> [accessed 25 April 2021]

(Note: The web-links provided were correct at time of compilation.)

UCEM e-Library - The UCEM e-Library has a searchable database ([e-Library > section 9](#)) containing circa 1,000 **Useful web-links to e-Resources** for all subject areas covered within our programme of studies, pertaining to the built environment profession and the education sector.

Disclaimer

Knowledge Foundations (formerly the Library e-bulletin) is intended to highlight news items and provide basic background information only. UCEM cannot accept responsibility for the content of external websites. Please view and refer to UCEM's [Terms of use](#).

Please note: some web-links do not work on Internet Explorer and therefore you may need to use a PC with [Chrome](#), [Firefox](#) or other browsers.

University College of Estate Management (UCEM), Horizons, 60 Queen's Road, RG1 4BS, UK – UK (Free): 0800 019 9697, International: +44 (0)118 921 4696, Email: library@ucem.ac.uk

UCEM Social media: [Facebook](#), [Twitter](#), [LinkedIn](#), [YouTube](#)

© Roper L (2021) *Knowledge Foundations* [online] Reading: UCEM. Available at: UCEM Website > Supported Online Learning > [e-Library](#)

